



1470 N. Roberts Street.
Helena, MT 59601

Phone: 406.457.0360

www.slatearchitecture.com

ADDENDUM 1

Date: March 27th, 2023 **Addendum #:** 1
Project: MSU NAH 360 Lab and 324 Lab Renovation
Project #: 202141
To: All Plan Holders of Record

This Addendum is issued to inform bidders of clarifications to the plans & specifications. The additions, clarifications, and corrections contained herein shall be made to the Project Manual, Drawings, and Schedules for the above referenced project, and shall be included in the scope of work and proposals to be submitted. References made below to the Project Manual and Drawings shall be used as a general guide only. Bidder shall determine the extent of work affected by Addendum items.

QUESTIONS (Q) / CLARIFICATIONS (C):

- Q1. After reviewing specifications 12 24 00 and 12 24 10 and the drawings, we see curtain call-outs on the drawings but not shade callouts. Please clarify locations and types of windows/room treatments.
- C1. Motorized laser shades are on the exterior and corridor windows. The laser curtains are on a track system and manually pulled. Reference to window shades vs curtains have been clarified in drawings A210 and A230. Both systems are covered in their respective spec sections and have been updated in the drawings and not owner provided, so are part of the bid.**

DRAWING MODIFICATIONS/CLARIFICATIONS:

- 1) SHEET A210 – FLOOR PLAN: this sheet in its entirety with the sheet attached. Modifications include;
 - a. References to 'LASER CURTAINS' at windows revised to indicate 'LASER WINDOW SHADES'
- 2) SHEET A230 – ROOM 360 REFLECTED CEILING PLAN: this sheet in its entirety with the sheet attached. Modifications include;
 - a. References to 'LASER CURTAINS' at windows revised to indicate 'LASER WINDOW SHADES'
- 3) SHEET A510 – INTERIOR ELEVATIONS & DOOR SCHEDULE: this sheet in its entirety with the sheet attached. Modifications include;
 - a. Valence panel added to Wall Cabinet W-1 to cover integrated cabinet lighting.

PRIOR APPROVALS

Review for prior approval is for general conformance with the plans and specifications. This review does not take the place of shop drawing review. All requirements of the Plans and Specifications must be met. This review does not relieve the Contractor of the responsibility for furnishing equipment and materials that meet the requirements of the Contract Documents.

Electrical Prior Approvals

SECTION	ITEM	APPROVED MANUFACTURER
26 5119	LED Lighting	Lumen FX Inc.

Mechanical Prior Approvals:

Prior approvals for equipment substitutions are based upon manufacturer's name only. No material submissions have been reviewed. Any substitutions shall meet the specification for the product specified. Any costs associated with electrical modifications necessary due to a product substitution shall be the responsibility of the mechanical contractor.

SECTION	ITEM	APPROVED MANUFACTURER
23 3300	Misc. Balancing and Control Dampers	United Eneritech

ATTACHMENTS:

- 1) Sheet A210
- 2) Sheet A230
- 3) Sheet A510

END OF ADDENDUM 1

GENERAL NOTES

1. THE INTENT OF THE DRAWINGS IS TO PROVIDE INFORMATION FOR CONSTRUCTION. IT IS IMPORTANT FOR THE CONTRACTOR TO VERIFY FIELD DIMENSIONS AND CONDITIONS BEFORE EXECUTION OF THE WORK. CONTACT THE ARCHITECT SHOULD DISCREPANCIES EXIST.
2. CONTRACTOR AND SUBCONTRACTORS SHALL PROVIDE ALL LABOR, MATERIALS AND EQUIPMENT TO COMPLETE ALL WORK SHOWN ON PLANS, CALLED FOR IN SPECIFICATION, OR REASONABLY IMPLIED FOR A COMPLETE INSTALLATION EVEN THOUGH NEITHER SHOWN ON PLANS OR CALLED OUT IN SPECIFICATIONS.
3. ALL NEW WALLS ARE TO EXTEND TO DECK, UNLESS OTHERWISE NOTED.
4. WHERE FLOOR IS TRANSITIONING TO A DIFFERENT MATERIAL, INSTALL A TRANSITION STRIP.
5. DIMENSIONS ARE FROM FACE OF EXISTING WALL FINISH, OR FACE OF NEW STUD UNLESS OTHERWISE NOTED.
6. DEBRIS SHALL BE PROMPTLY REMOVED FROM THE BUILDING AND THE SITE AND DISPOSED OF IN A LEGAL MANNER. SURFACES IN THE CONSTRUCTION AREA SHALL BE MAINTAINED IN A BROOM CLEAN CONDITION AT THE END OF EACH WORK DAY.
7. THE CONTRACTOR SHALL PROVIDE ALL DEMOLITION INCIDENTAL TO OR REQUIRED FOR NEW AND RENOVATION CONSTRUCTION WHETHER OR NOT IT IS SPECIFICALLY NOTED, INCLUDING, BUT NOT LIMITED TO, ALL OTHER WORK THAT MIGHT REASONABLY BE REQUIRED TO BE REMOVED IN PREPARATION FOR SPECIFIED FINISHES. DEMOLITION SHALL BE PERFORMED IN A MANNER THAT WILL NOT DAMAGE ANY ITEMS OR SURFACES INDICATED TO REMAIN. ITEMS OR SURFACES SHALL BE PATCHED IF NECESSARY TO PROVIDE A SUITABLE SUB-STRATA FOR NEW FINISHES.

SYMBOL LEGEND

- NEW WALL/ITEM/ELEMENT TO BE CONSTRUCTED, FIELD VERIFY TYPES AND CONDITIONS
- EXISTING WALL/ITEM/ELEMENT TO REMAIN AND BE PROTECTED, FIELD VERIFY TYPES AND CONDITIONS

GENERAL FINISH NOTES

1. THE INTENT OF THE DRAWINGS IS TO PROVIDE INFORMATION FOR CONSTRUCTION. IT IS IMPORTANT FOR THE CONTRACTOR TO VERIFY FIELD DIMENSIONS AND CONDITIONS BEFORE EXECUTION OF THE WORK. CONTACT THE ARCHITECT SHOULD DISCREPANCIES EXIST.
2. CONTRACTOR AND SUBCONTRACTORS SHALL PROVIDE ALL LABOR, MATERIALS AND EQUIPMENT TO COMPLETE ALL WORK SHOWN ON PLANS, CALLED FOR IN SPECIFICATION, OR REASONABLY IMPLIED FOR A COMPLETE INSTALLATION EVEN THOUGH NEITHER SHOWN ON PLANS OR CALLED OUT IN SPECIFICATIONS.
3. WHERE CARPET IS TRANSITIONING TO EXISTING FLOOR FINISH THAT IS ANYTHING OTHER THAN CARPET, INSTALL A TRANSITION STRIP.

SYMBOL LEGEND

- ROOM NAME
- ROOM NUMBER
- WALLS, SEE SCHEDULE BELOW
- BASE, SEE SCHEDULE BELOW
- SYMBOL INDICATES GENERAL FINISHES FOR ROOM
- INDICATES CHANGE IN FINISH TYPE FROM GENERAL ROOM FINISHES

- NEW CORNER GUARD
- FLOOR TRANSITION, WALL FINISH CHANGE

WALLS

- W-1 GYPSUM BOARD; PNT-1
- W-2 TOUCH UP AND PNT NEW INFILL WALLS TO MATCH EXISTING COLOR.

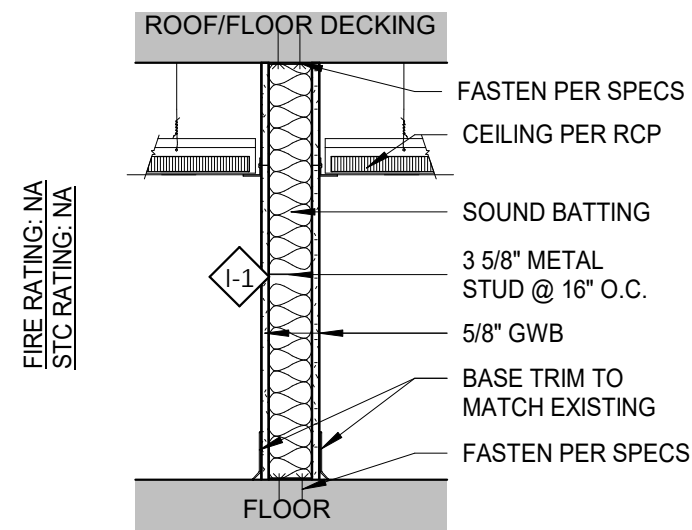
BASE

- B-1 RESILIENT COVE BASE
- B-N/A NOT APPLICABLE

FLOORS

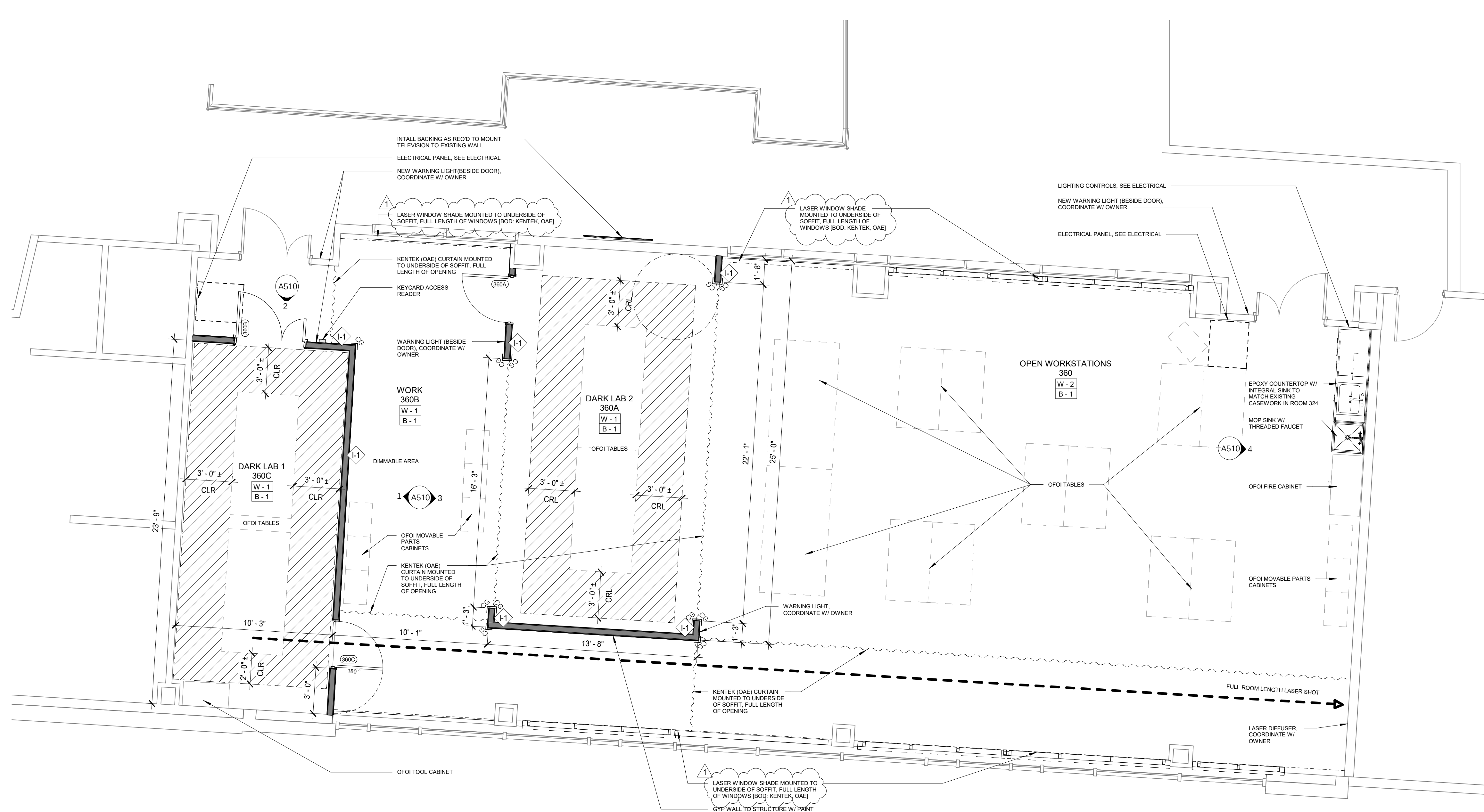
- EXISTING POLISHED CONCRETE
- PAINTED STRIPING

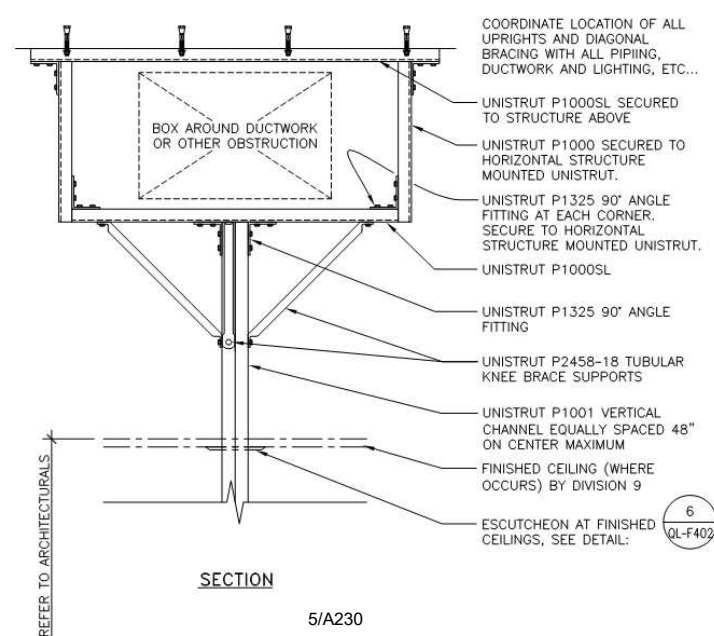
NOTE: HATCH INDICATES MATERIAL TYPE AND IS NOT A REPRESENTATION OF INDIVIDUAL MATERIAL COURSING



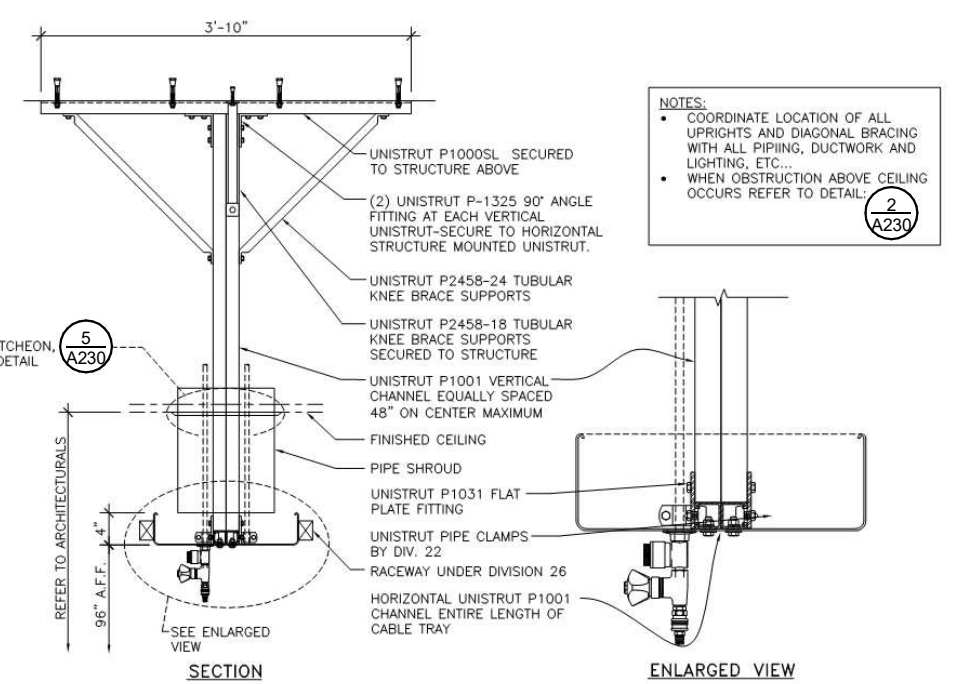
METAL STUD WALL TYPES

3/4" = 1'-0"

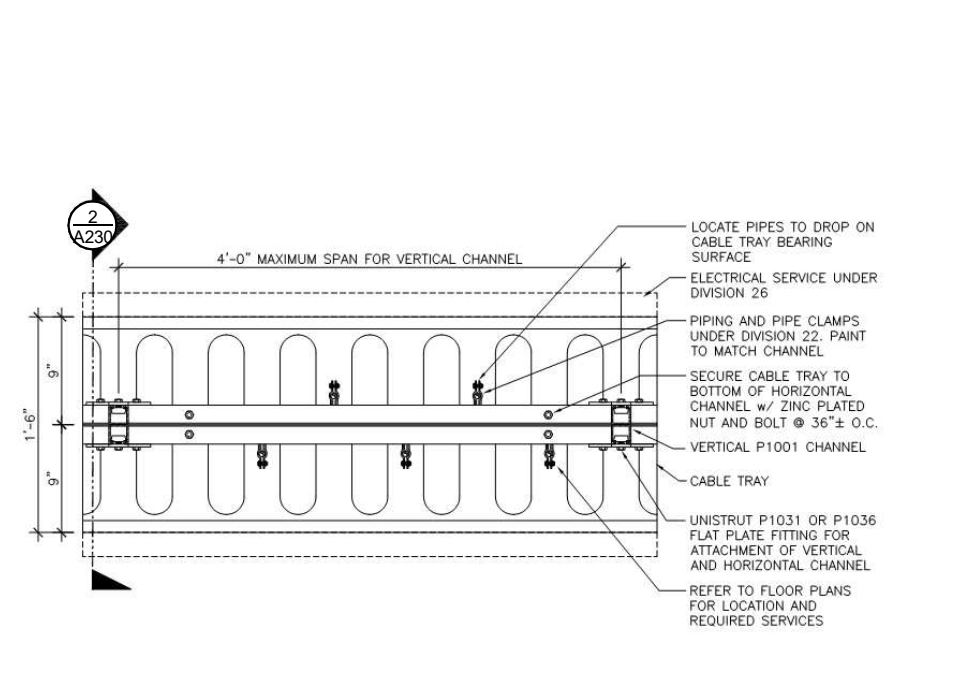




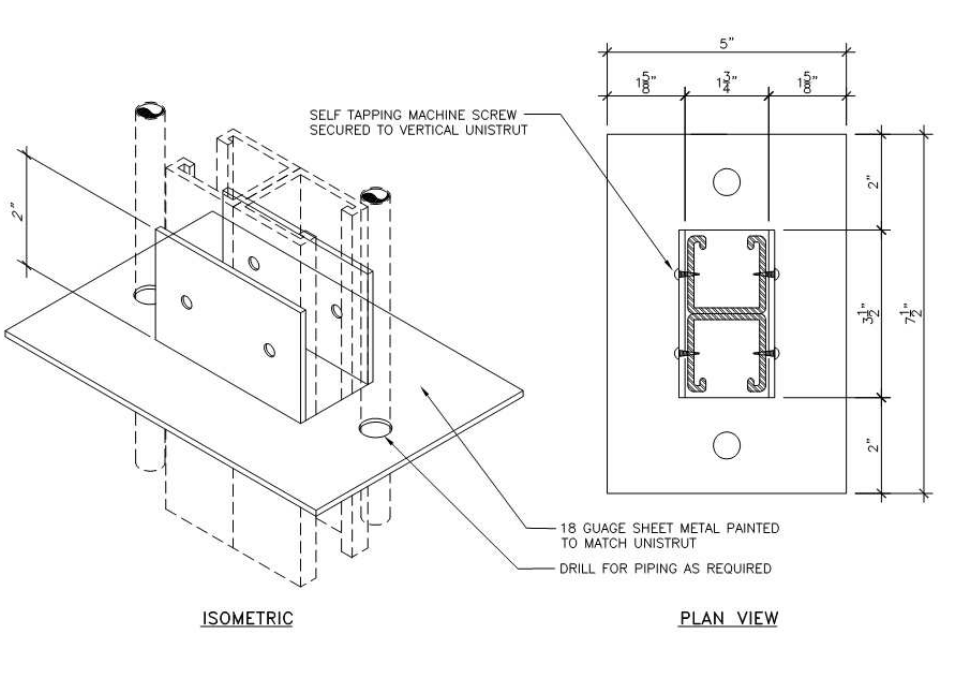
2 OVERHEAD SUPPORT W/ OBSTRUCTION
1/2" = 1'-0"



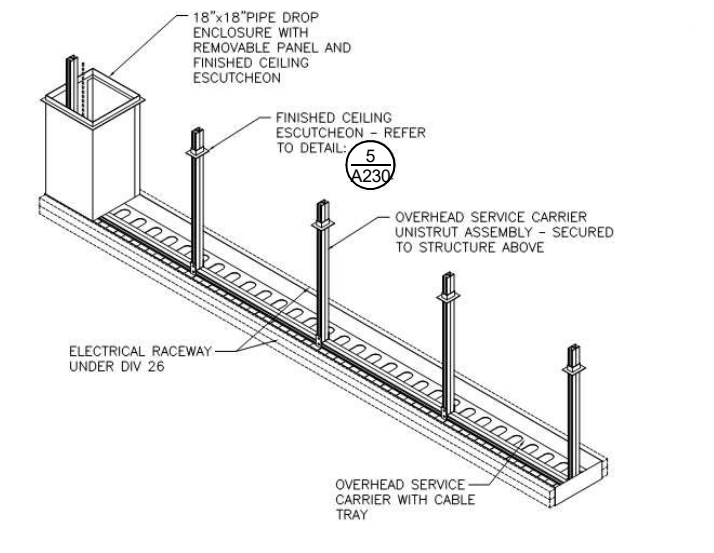
3 OVERHEAD CABLE TRAY WITH RACEWAY
1/2" = 1'-0"



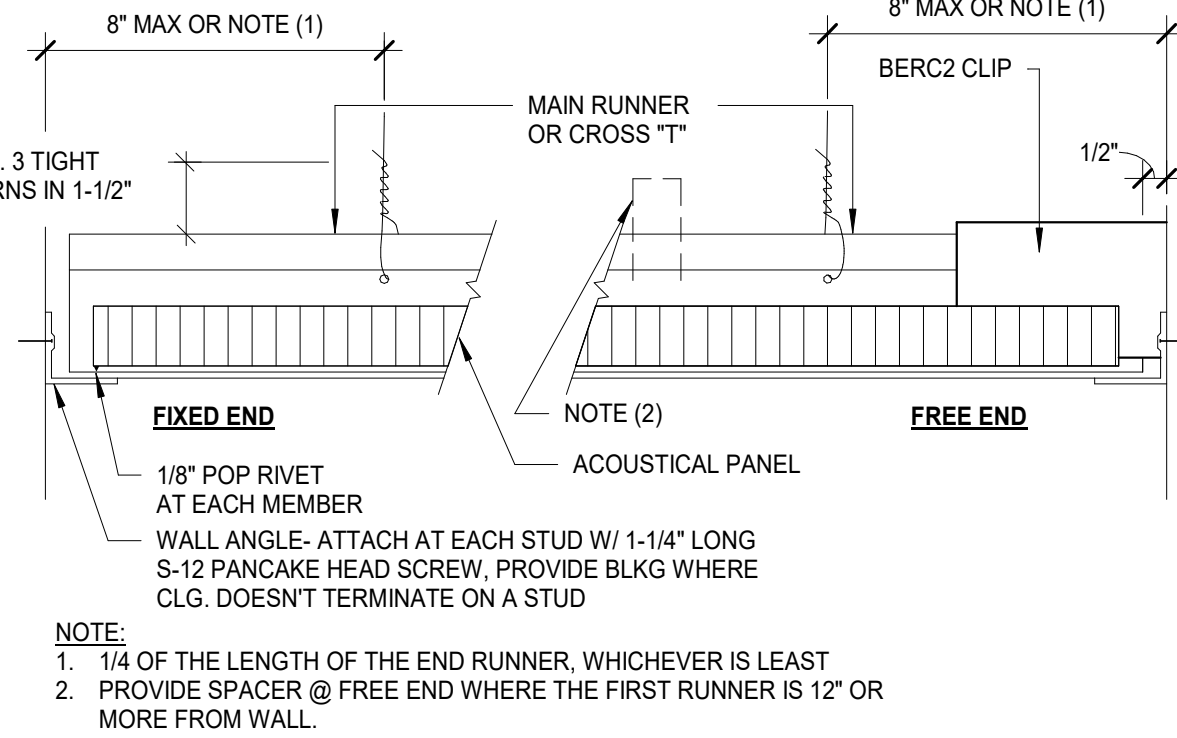
4 OVERHEAD CABLE TRAY
3/4" = 1'-0"



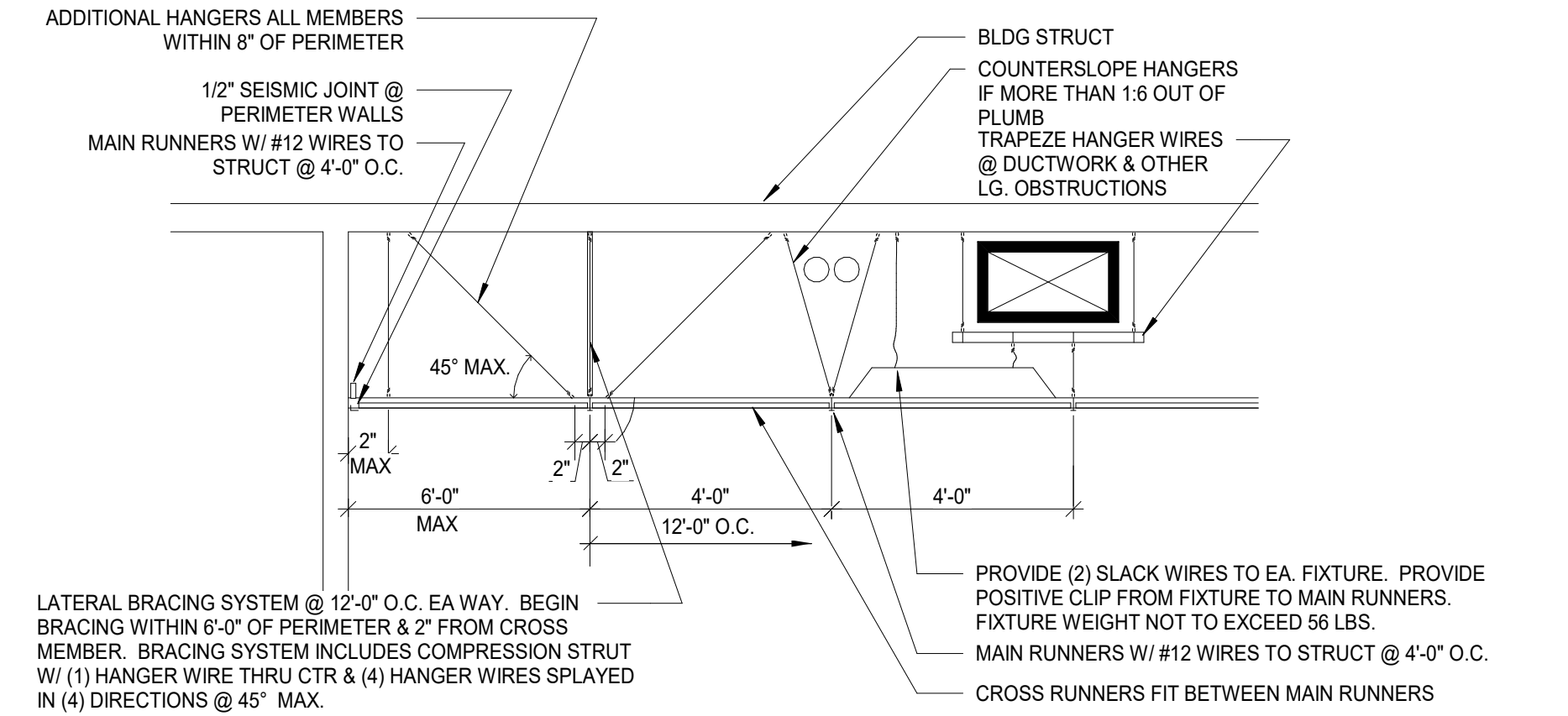
5 ESCUTCHEON
3" = 1'-0"



6 OVERHEAD CABLE TRAY ISOMETRIC
3/16" = 1'-0"



7 ACOUSTICAL CEILING DETAIL #1
3" = 1'-0"



8 SEISMIC CEILING ASSEMBLY
1 1/2" = 1'-0"

GENERAL NOTES

- THE INTENT OF THE DRAWINGS IS TO PROVIDE INFORMATION FOR CONSTRUCTION. IT IS IMPORTANT FOR THE CONTRACTOR TO VERIFY FIELD DIMENSIONS AND CONDITIONS BEFORE EXECUTION OF THE WORK. CONTACT THE ARCHITECT SHOULD DISCREPANCIES EXIST.
- CONTRACTOR AND SUBCONTRACTORS SHALL PROVIDE ALL LABOR, MATERIALS AND EQUIPMENT TO COMPLETE ALL WORK SHOWN ON PLANS, CALLED FOR IN SPECIFICATION, OR REASONABLY IMPLIED FOR A COMPLETE INSTALLATION EVEN THOUGH NEITHER SHOWN ON PLANS OR CALLED OUT IN SPECIFICATIONS.
- ALL NEW WALLS ARE TO EXTEND TO DECK, UNLESS OTHERWISE NOTED.
- WHERE FLOOR IS TRANSITIONING TO A DIFFERENT MATERIAL, INSTALL A TRANSITION STRIP.
- DIMENSIONS ARE FROM FACE OF EXISTING WALL FINISH, OR FACE OF NEW STUD UNLESS OTHERWISE NOTED.
- DEBRIS SHALL BE PROMPTLY REMOVED FROM THE BUILDING AND THE SITE AND DISPOSED OF IN A LEGAL MANNER. SURFACES IN THE CONSTRUCTION AREA SHALL BE MAINTAINED IN A BROOM CLEAN CONDITION AT THE END OF EACH WORK DAY.
- THE CONTRACTOR SHALL PROVIDE ALL DEMOLITION INCIDENTAL TO OR REQUIRED FOR NEW AND RENOVATION CONSTRUCTION WHETHER OR NOT IT IS SPECIFICALLY NOTED, INCLUDING, BUT NOT LIMITED TO, ALL OTHER WORK THAT MIGHT REASONABLY BE REQUIRED TO BE REMOVED IN PREPARATION FOR SPECIFIED FINISHES. DEMOLITION SHALL BE PERFORMED IN A MANNER THAT WILL NOT DAMAGE ANY ITEMS OR SURFACES INDICATED TO REMAIN. ITEMS OR SURFACES SHALL BE PATCHED IF NECESSARY TO PROVIDE A SUITABLE SUB-STRATA FOR NEW FINISHES.

SYMBOL LEGEND

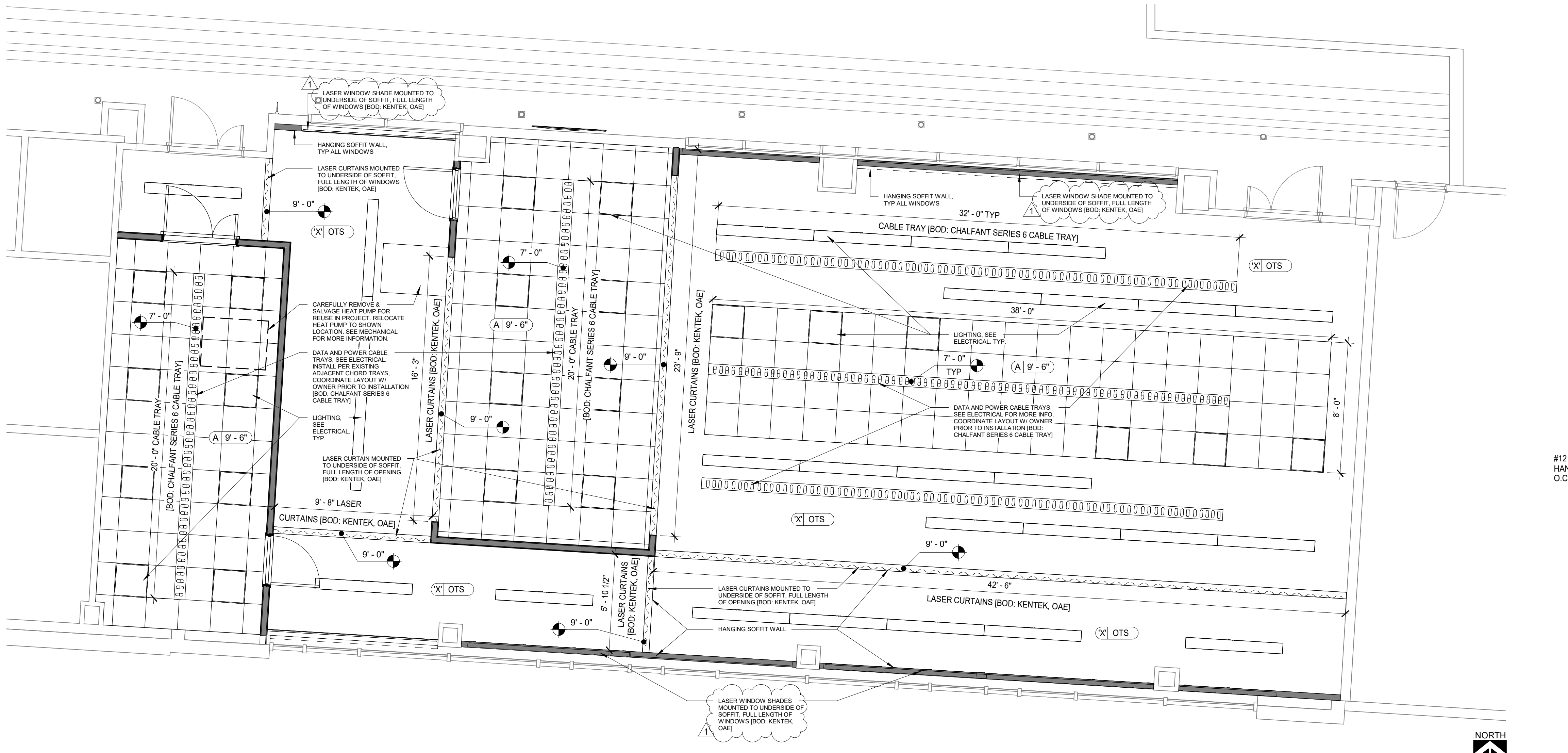
NEW WALL/ITEM/ELEMENT TO BE CONSTRUCTED, FIELD VERIFY TYPES AND CONDITIONS

EXISTING WALL/ITEM/ELEMENT TO REMAIN AND BE PROTECTED, FIELD VERIFY TYPES AND CONDITIONS

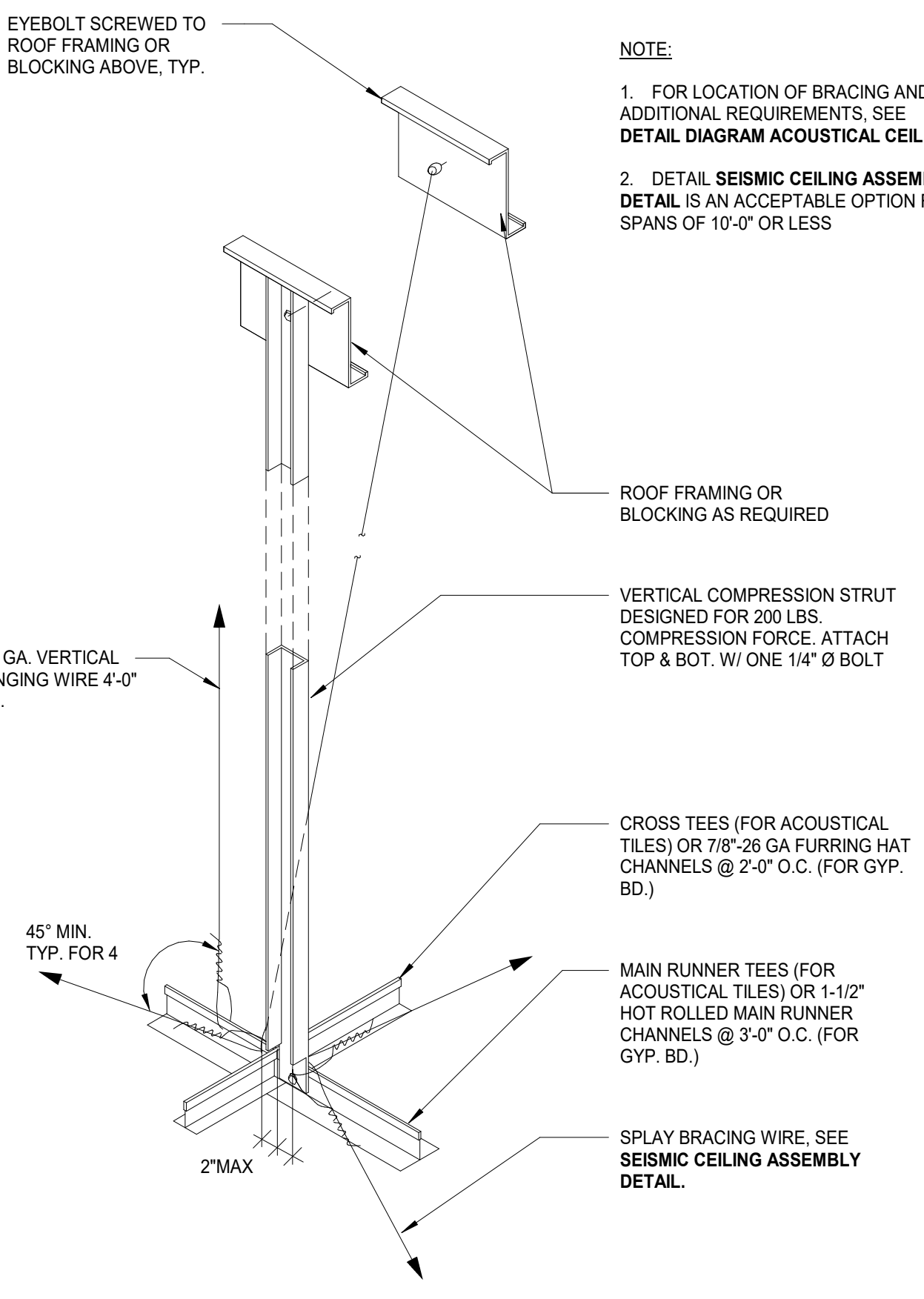
CEILING TYPE LEGEND

'A' LAY-IN ACOUSTICAL PANEL [BOD: CERTAINTED BOCL 224 -OR- ARMSTRONG 915]

'X' OPEN TO EXISTING STRUCTURE AND SYSTEMS



9 CREATION LAB RCP
1/4" = 1'-0"



9 SUSPENDED CEILING BRACING
3" = 1'-0"

CONSTRUCTION DRAWINGS

360 CREATION LAB & 324 LAB - MSU NAH
MONTANA STATE UNIVERSITY

SLATE ARCHITECTURE, INC.
1470 N ROBERTS STREET
HELENA, MONTANA 59601
T 406.457.0380
WWW.SLATEARCHITECTURE.COM

DRAWN BY: RH
REVIEWED BY: SC
REV. DESCRIPTION DATE
1 ADDENDUM 01 03/27/23

PPA#19-0174
SLATE#202141

SHEET TITLE
ROOM 360
REFLECTED CEILING PLAN

SHEET
A230

DATE
03/07/2023

REV.	DESCRIPTION	DATE
1	ADDENDUM 01	03/27/23

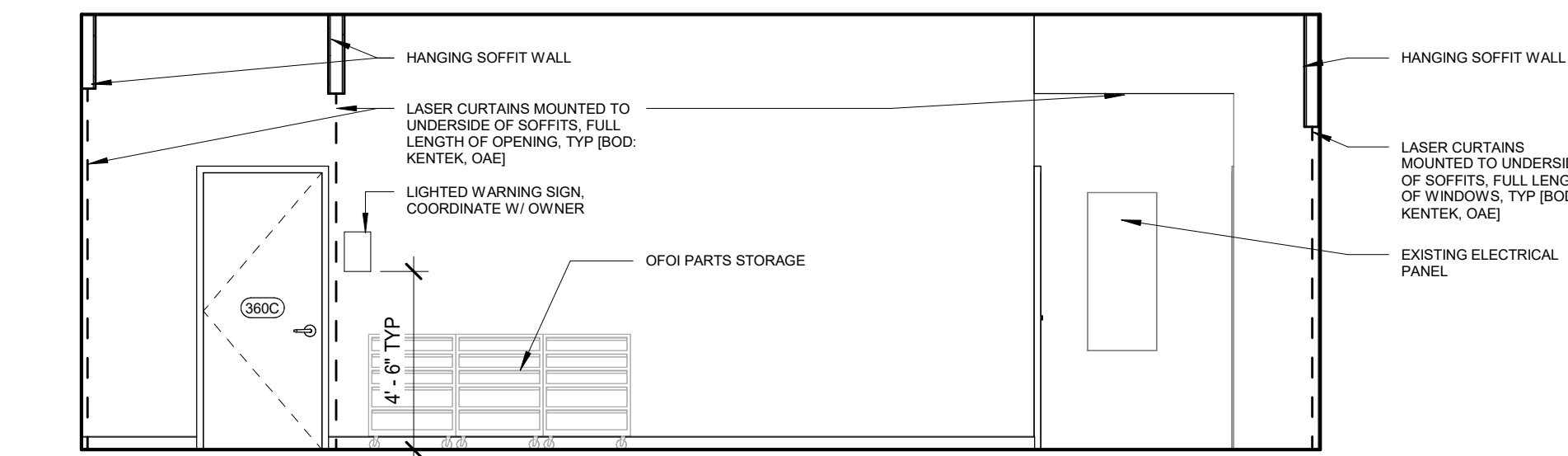


GENERAL NOTES

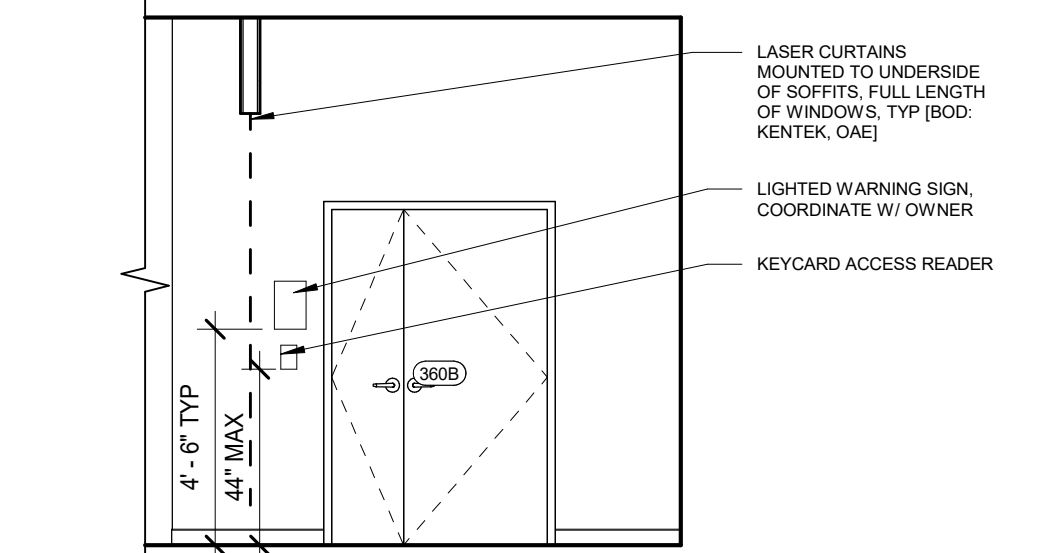
- THE INTENT OF THE DRAWINGS IS TO PROVIDE INFORMATION FOR CONSTRUCTION. IT IS IMPORTANT FOR THE CONTRACTOR TO VERIFY FIELD DIMENSIONS AND CONDITIONS BEFORE EXECUTION OF THE WORK. CONTACT THE ARCHITECT SHOULD DISCREPANCIES EXIST.
- CONTRACTOR AND SUBCONTRACTORS SHALL PROVIDE ALL LABOR, MATERIALS AND EQUIPMENT TO COMPLETE ALL WORK SHOWN ON PLANS, CALLED FOR IN SPECIFICATION, OR REASONABLY IMPLIED FOR A COMPLETE INSTALLATION EVEN THOUGH NEITHER SHOWN ON PLANS OR CALLED OUT IN SPECIFICATIONS.
- ALL NEW WALLS ARE TO EXTEND TO DECK, UNLESS OTHERWISE NOTED.
- WHERE FLOOR IS TRANSITIONING TO A DIFFERENT MATERIAL, INSTALL A TRANSITION STRIP.
- DIMENSIONS ARE FROM FACE OF EXISTING WALL FINISH, OR FACE OF NEW STUD UNLESS OTHERWISE NOTED.
- DEBRIS SHALL BE PROMPTLY REMOVED FROM THE BUILDING AND THE SITE AND DISPOSED OF IN A LEGAL MANNER. SURFACES IN THE CONSTRUCTION AREA SHALL BE MAINTAINED IN A BROOM CLEAN CONDITION AT THE END OF EACH WORK DAY.
- THE CONTRACTOR SHALL PROVIDE ALL DEMOLITION INCIDENTAL TO OR REQUIRED FOR NEW AND RENOVATION CONSTRUCTION WHETHER OR NOT IT IS SPECIFICALLY NOTED, INCLUDING, BUT NOT LIMITED TO, ALL OTHER WORK THAT MIGHT REASONABLY BE REQUIRED TO BE REMOVED IN PREPARATION FOR SPECIFIED FINISHES. DEMOLITION SHALL BE PERFORMED IN A MANNER THAT WILL NOT DAMAGE ANY ITEMS OR SURFACES INDICATED TO REMAIN. ITEMS OR SURFACES SHALL BE PATCHED IF NECESSARY TO PROVIDE A SUITABLE SUB-STRATA FOR NEW FINISHES.

SYMBOL LEGEND

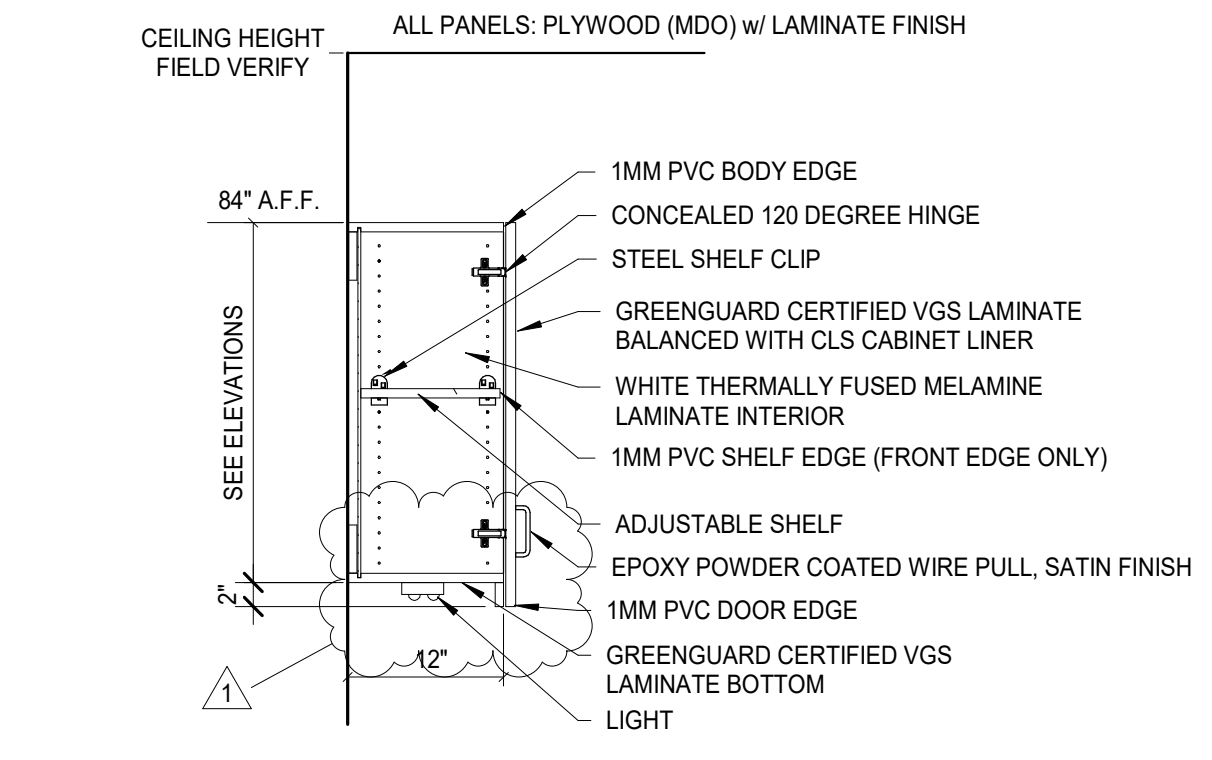
- NEW WALL/ITEM/ELEMENT TO BE CONSTRUCTED, FIELD VERIFY TYPES AND CONDITIONS
- EXISTING WALL/ITEM/ELEMENT TO REMAIN AND BE PROTECTED, FIELD VERIFY TYPES AND CONDITIONS



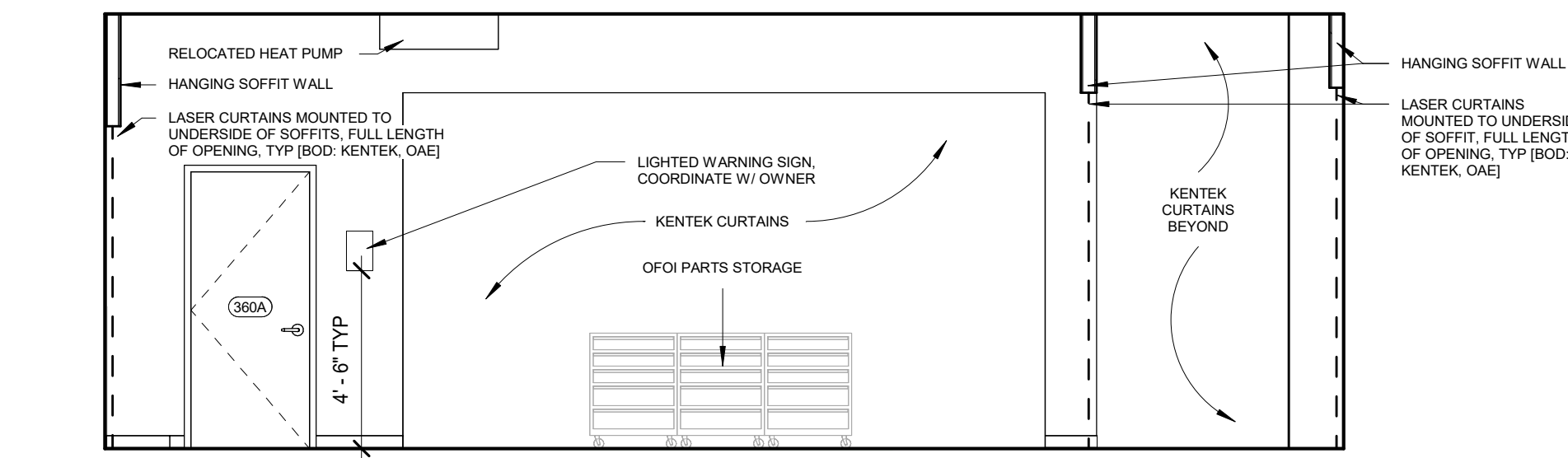
1 DARK LAB 1 EAST WALL
1/4" = 1'-0"



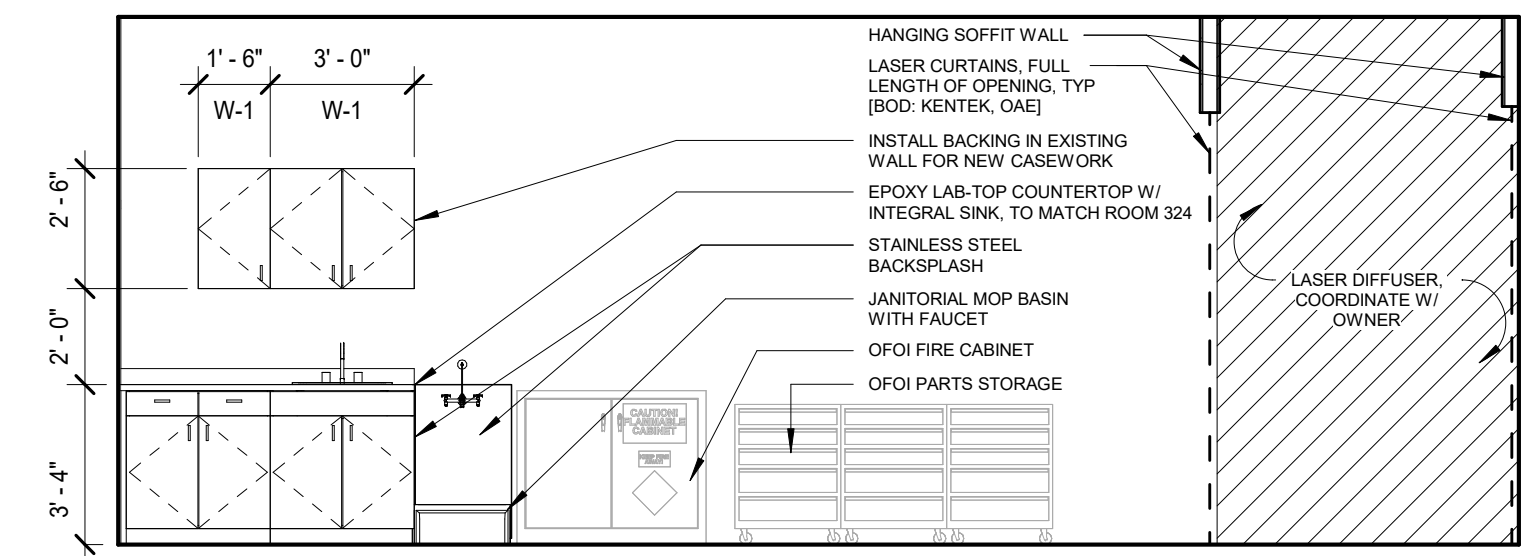
2 DARK LAB 1 NORTH WALL
1/4" = 1'-0"



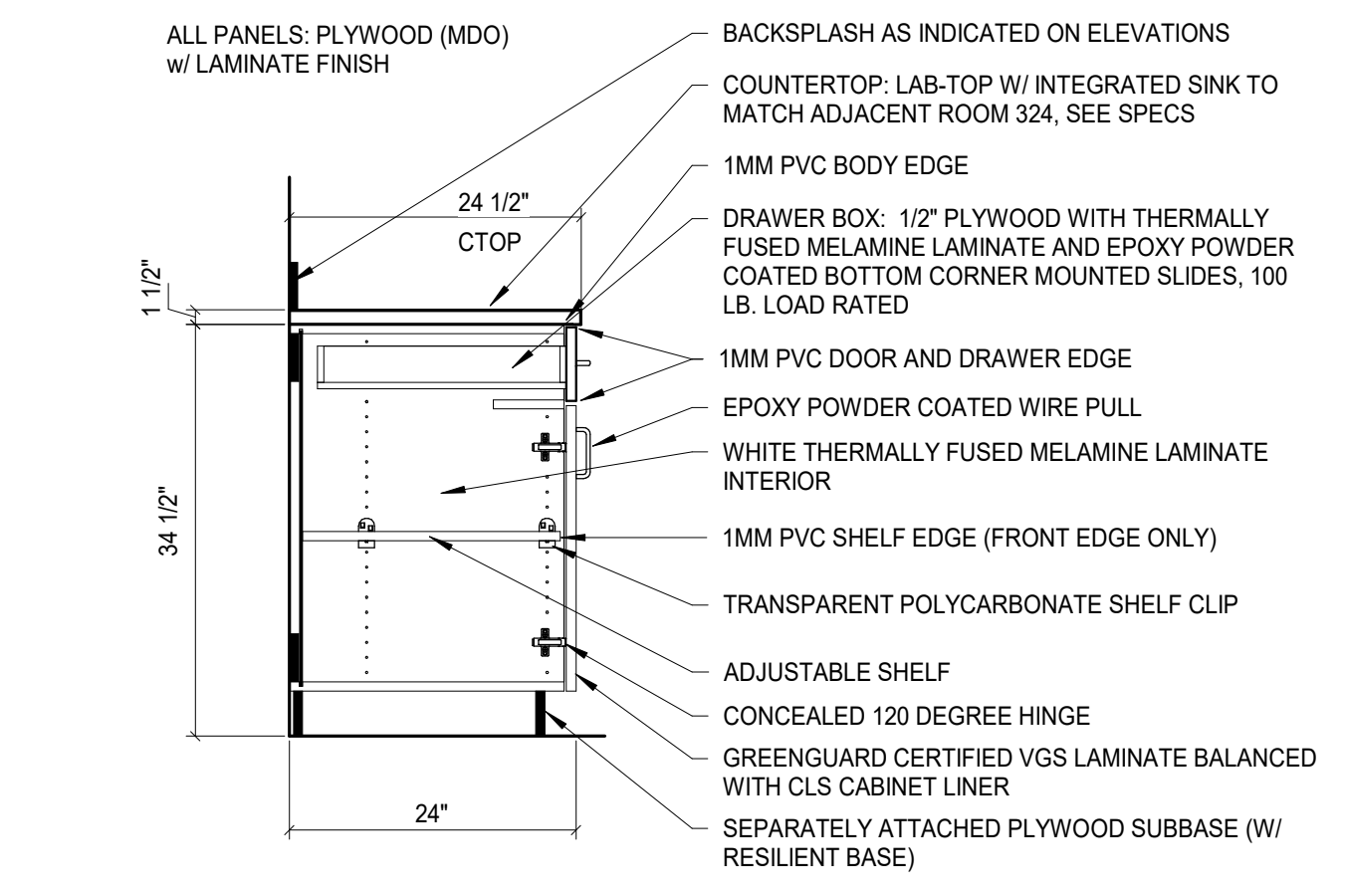
10 W-1 (WALL CABINET TYP)
3/4" = 1'-0"



3 DARK LAB 2 WEST WALL
1/4" = 1'-0"



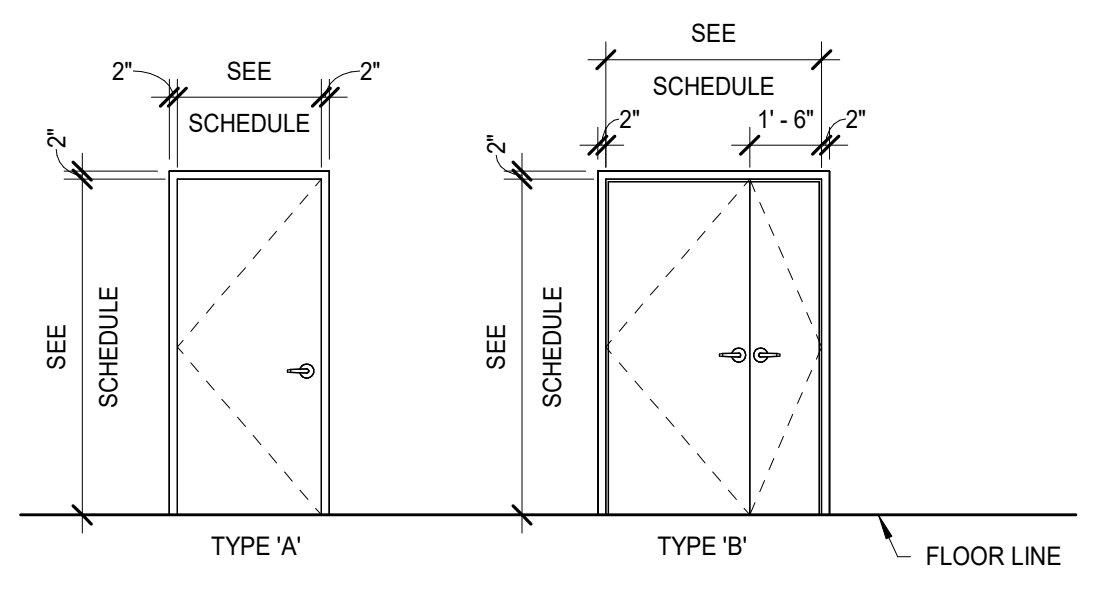
4 LAB 360 EAST WALL
1/4" = 1'-0"



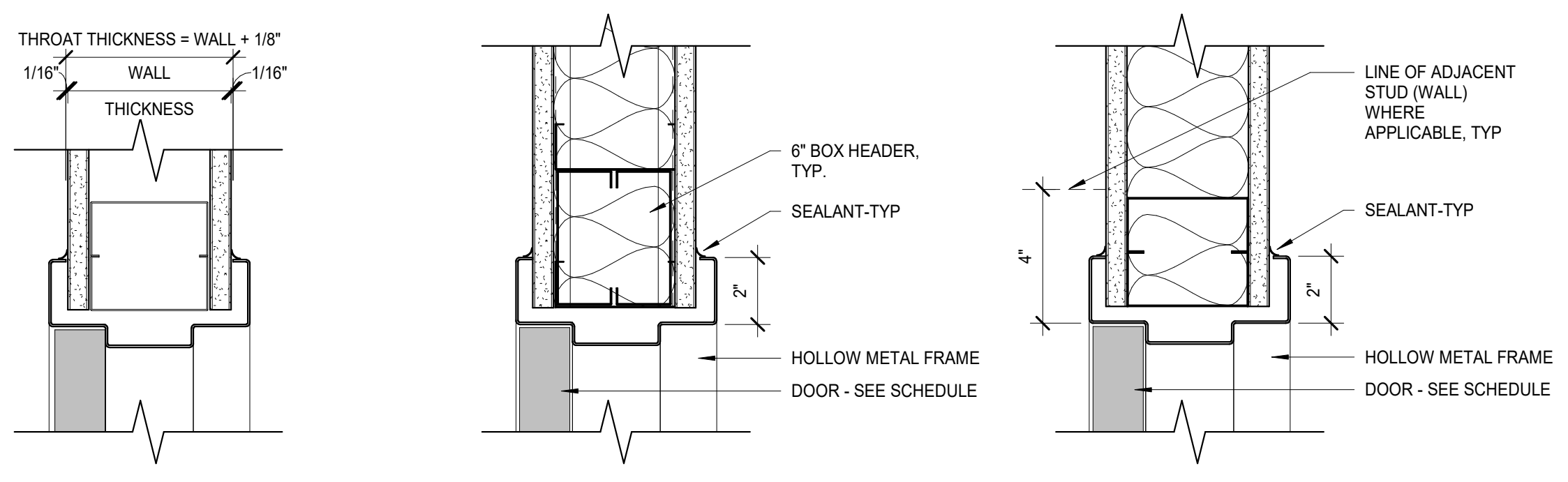
8 B-2 (DOOR DRAWER COMBO)
3/4" = 1'-0"

DOOR SCHEDULE													
DOOR NO.	TYPE	THICKNESS	DOOR				FRAME		GLAZING TYPE	HARDWARE	DETAILS (ON A5/10)		COMMENTS
			WIDTH	HEIGHT	MATERIAL	FINISH	MATERIAL	FINISH			HEAD	JAMB	
360A	A	1 3/4"	3'-0"	7'-0"	HM	PNT	HM	PNT	-	H3	6	7	MATCH ADJACENT EXISTING
360B	B	1 3/4"	4'-6"	7'-0"	HM	PNT	HM	PNT	-	H1	6	7	MATCH ADJACENT EXISTING
360C	A	1 3/4"	3'-0"	7'-0"	HM	PNT	HM	PNT	-	H2	6	7	180° DOOR SWING HINGES, MATCH ADJACENT EXISTING

HARDWARE SCHEDULE	
HARDWARE SET - "H1" ACCESS LEAF	<ul style="list-style-type: none"> - 3 PAIR HINGES - 1 CLOSER - EXTRA HEAVY DUTY ARM W/ HOLD OPEN - 1 CYLINDRICAL LEVER LOCKSET - STORAGE FUNCTION - 1 KEYCARD READER, COORDINATE W/ I.T. - 1 MANUAL FLUSH BOLT - TOP AND BOTTOM - 2 KICKPLATE - 2 WALLSTOPS - 2 SETS OF SILENCERS - 1 WARNING LIGHT
HARDWARE SET - "H2" FULL SWING STORAGE	<ul style="list-style-type: none"> - 1 1/2 PAIR HINGES - FULL SWING - 1 CLOSER - EXTRA HEAVY DUTY ARM W/ HOLD OPEN, FULL SWING - 1 CYLINDRICAL LEVER LOCKSET - STORAGE FUNCTION - 1 WALLSTOP - 1 SET OF SILENCERS - 1 WARNING LIGHT
HARDWARE SET - "H3" PASSAGE	<ul style="list-style-type: none"> - 1 1/2 PAIR HINGES - 1 CYLINDRICAL LEVER LOCKSET - PASSAGE FUNCTION - 1 WALLSTOP - 1 SET OF SILENCERS - 1 WARNING LIGHT



DOOR AND FRAME ELEVATION
1/4" = 1'-0"



5 FRAME THROAT DETAIL 3" = 1'-0" 6 DOOR DETAIL - HM HEAD 3" = 1'-0" 7 DOOR DETAIL - HM JAMB 3" = 1'-0"