



Flathead County 4-H Steer Projects Nutrition and You

Cash Yount
CHS Nutrition
Nutrition Consultant



Tomorrow's producers Today

- What is your project?
- What are your goals?
- What are your tools?
- What is your motivation?



Put Your Best Foot Forward

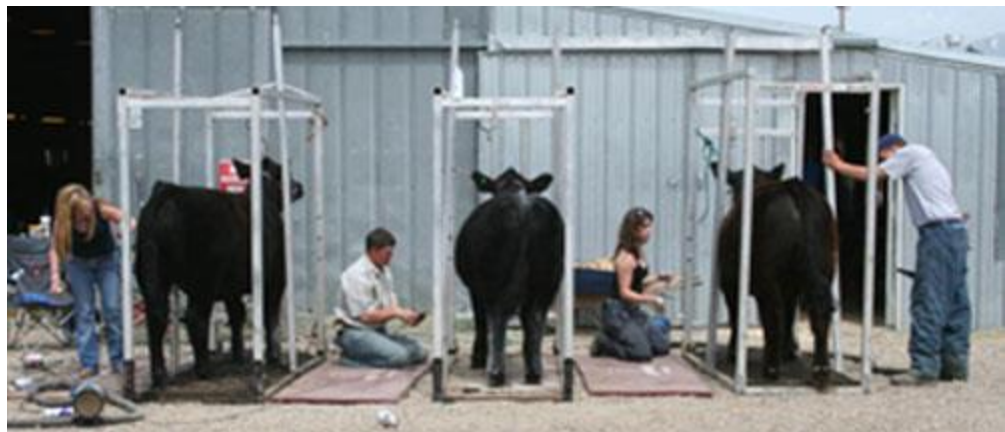
- Select the right animal for the right date
- Determine how much weight gain is needed
- Determine ADG(Average Daily Gain)
- Select Feed Source
- Provide the best growing environment





Selecting Your Animal

- Know your fair date
- Know your finish weight goal
- Personal history in the project
- Budget





Let's Get to Work



- Animal
- Feed Plan
- Shelter/Space



Project Profiles

4H and FFA Livestock Market Project Management Tips

	Average ADG	Days	ADG	Finished Weight Range	Rectal Temperature
Beef	2.8#	240	2-4#	1200-1400#	101 F
Swine	1.7#	90	1-2#	230-270#	102.5 F
Sheep	0.6#	90	0.4-0.9#	125-150#	102.3 F
Goat	0.35#	90	0.25-.6#	80-120#	103 F



Average Daily Gain

TAKE POUNDS OF GAIN NEEDED DIVIDED
BY NUMBER OF DAYS TILL THE SHOW

EXAMPLE

Market Steer

1250# target wt- 800# current wt= 450# gain

150 days to the fair

$450\# / 150 \text{ days} = 3\# \text{ of gain per day}$



Nutritional Requirements

- ENERGY
- PROTEIN
- FIBER
- MACRO MINERALS
- MICRO MINERALS
- WATER



Meeting Those Requirements

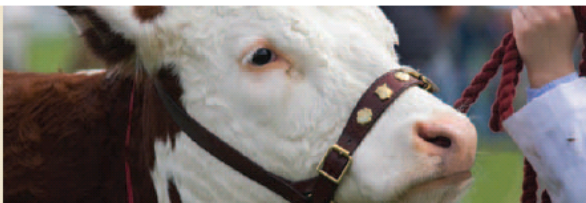


- Grains– whole, ground and rolled– Corn, Oats, Barley
- Fiber sources– Beet pulp, midds, corn cobs, malt sprouts, alfalfa pellets
- Protein–SBM, canola, DDG
- Fat– Vegetable oil, DDG, Rice Bran
- Forage– straw, grass, grain hay, alfalfa



Beef Feed Tag

- CP 16% for optimum muscle development
- 3–5% Fat for improved hair sheen and bloom
- Full trace mineral and vitamin package for improved health and performance



Beef Show Feeds

Performance Nutrition for the Show Ring

Payback™ Champion Steer Benefits:

- 16% Protein for maximum genetic growth and frame.
- High energy feed for muscle development and fast efficient gain.
- Contains Yeast Culture and Yucca Schidigera (Micro Aid®) to stimulate appetite, moderate heat stress, and improve rumen function.
- Fortified with Chelated Copper and Zinc, for improved hoof development and immune system function.
- Contains Soybean Oil for improved hair sheen and bloom.



Champion Steer Texturized B30

For Feedlot Cattle.
For improved feed efficiency in cattle fed in confinement for slaughter.

ACTIVE DRUG INGREDIENT	
Lasalocid	30 g/ton
GUARANTEED ANALYSIS	
Crude Protein* not less than	16.0 %
* (This includes not more than 1.5% equivalent crude protein from non-protein nitrogen.)	
Crude Fat not less than	5.0 %
Crude Fiber not more than	7.0 %
Calcium not less than	0.5 %
Calcium not more than	1.0 %
Phosphorus not less than	0.5 %
Salt not less than	0.25 %
Salt not more than	0.75 %
Potassium not less than	0.75 %
Selenium not less than	0.2 ppm
Vitamin A not less than	4,000 IU/lb
Vitamin D not less than	400 IU/lb

FEEDING DIRECTIONS

CHAMPION STEER TEXTURIZED B30 MEDICATED is a high protein, complete feed especially designed for show cattle. Feed continuously at a rate of 6.7 to 24 pounds per head daily to provide not less than 100 nor more than 360 milligrams of Lasalocid. Cattle should be gradually adjusted to CHAMPION STEER TEXTURIZED B30 MEDICATED to avoid digestive disturbances or other management problems. Dividing the daily ration into two equal feedings is suggested. For best results, this product should not be self-fed. Although CHAMPION STEER TEXTURIZED B30 MEDICATED is a complete feed in that it contains some roughage, grain, and supplement, limit feeding approximately 10 to 15% good quality, long hay is recommended. Fresh, clean water should be available at all times.

WARNING: A withdrawal period has not been established for this product in pre-ruminating cattle. Do not use in calves to be processed for veal.

CAUTION: The safety of Lasalocid in unapproved species has not been established. Do not allow horses or other equines access to feed containing Lasalocid as ingestion may be fatal. For ruminant use only.



Champion Steer Pellet B30

For Feedlot Cattle.
For improved feed efficiency in cattle fed in confinement for slaughter.

ACTIVE DRUG INGREDIENT	
Lasalocid	30 g/ton
GUARANTEED ANALYSIS	
Crude Protein* not less than	16.0 %
* (This includes not more than 1.5% equivalent crude protein from non-protein nitrogen.)	
Crude Fat not less than	5.0 %
Crude Fiber not more than	16.0 %
Calcium not less than	0.5 %
Calcium not more than	1.0 %
Phosphorus not less than	0.5 %
Salt not less than	0.25 %
Salt not more than	0.75 %
Potassium not less than	0.75 %
Selenium not less than	0.2 ppm
Vitamin A not less than	4,000 IU/lb
Vitamin D not less than	400 IU/lb

FEEDING DIRECTIONS

CHAMPION STEER PELLETS B30 MEDICATED is a high protein, complete feed especially designed for show cattle. Feed continuously at a rate of 6.7 to 24 pounds per head daily to provide not less than 100 nor more than 360 milligrams of Lasalocid. Cattle should be gradually adjusted to CHAMPION STEER PELLETS B30 MEDICATED to avoid digestive disturbances or other management problems. Dividing the daily ration into two equal feedings is suggested. For best results, this product should not be self-fed. Although CHAMPION STEER PELLETS B30 MEDICATED is a complete feed in that it contains some roughage, grain, and supplement, limit feeding approximately 10 to 15% good quality, long hay is recommended. Fresh, clean water should be available at all times.

WARNING: A withdrawal period has not been established for this product in pre-ruminating cattle. Do not use in calves to be processed for veal.

CAUTION: The safety of Lasalocid in unapproved species has not been established. Do not allow horses or other equines access to feed containing Lasalocid as ingestion may be fatal. For ruminant use only.



FEED ADDITIVES

- **IONOPHORES– BOVATEC**
 - Improves feed efficiency and rate of gain, helps prevent coccidiosis. Has no withdrawal
- **SODIUM BICARB**
 - Helps prevent acidosis
- **YEAST**
 - Keeps rumen microbes functioning at high levels. Great for the heat of the summer



PAYBACK[®]

Always Check the Tag



- Name of feed
- Is it the right kind of feed
- Medicated
- Feeding directions
- Form



General Feeding Guidelines

- Hand feed twice daily, close to the same time of day. You will get the best gains and feed efficiencies this way!
- If self-feeding, never let the feeder run empty and keep it clean of bad feed and foreign material.
- Feed by weight and not volume
- Feed long stem, grass / grass alfalfa mix hay, no straight alfalfa.
- Provide free choice salt and mineral



Starting on Feed

- Start slow and be consistent with your feeding times
- **WEIGH FEED OUT– AVOID FEEDING BY VOLUME**
- Start calves on 4 pounds of grain a day
- **INCREASE FEED: 1# for Steers PER DAY EVERY 3 DAYS AS LONG AS THEY ARE CLEANING IT UP**





Beef Feeding Table

Payback Show Steer Feeding Sheet

Steer Wt.	Days on Feed	# Grain	# Hay
700	1	14	7
750	15	28	7.5
800	29	42	8
850	43	56	8
900	57	70	8.3
950	71	84	8.7
1000	85	98	9
1050	99	112	8
1100	113	126	7
1150	127	140	6.5
1200	141	154	6
1250	155	168	6
1300	169	182	5.5
Totals	600#	3444	1337

- Feeding steers multiple feedings per day will improve gains and performance
- Feeding a balanced diet is very key to optimizing gain
- Avoid feeding forage that would be considered too rich



Why Your Animal Might Go Off Feed

- Animals will go off feed for many reasons. The feed is not the only reason animals go off feed. Good management will reduce and minimize this obstacle.
- Bloat or acidosis will cause animals to go off of feed, the leading causes for this are:
 - Irregular feedings
 - Change of feeds
 - Feeding of rich forage such as alfalfa



Why Your Animal Might Go Off Feed Cont.

Animals tend to go off feed if:

- No water is available to drink or the water is frozen, too hot or dirty
- They are sick
- They are stressed
- Keep accurate records of what your animal normally consumes
 - How much they eat
 - How fast they eat it
- Understand what is normal behavior and watch for any changes in this behavior





Water





Daily Water Needs for Livestock

- BEEF CATTLE– 7 TO 17 GALLONS
- DAIRY CATTLE– 10 TO 29 GALLONS
- HORSE– 8 TO 12 GALLONS
- SHEEP/GOATS– 1 TO 4 GALLONS
- SWINE– 3 TO 6 GALLONS

Maintain cool, clean, free choice access to water!





Let's Get to Work

- Animal
- Feed Plan
- Shelter/Space





Make 'Em Cozy

PAYBACK[®]

- Make sure that your animal has enough space
- Have a place the animal can get out of the weather
 - This means both the **HOT** and the **COLD**
- Animals will perform best on feed between 50–68
- Have a plan for the extreme heat





Space Requirements

Steers—60–80 square feet for pen

15–20 square feet for shelter

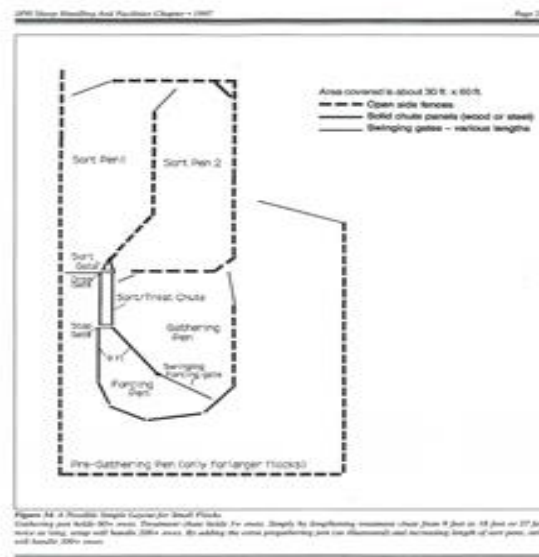
20–24" in surface area for feeder

18–22" (throat high) for feeder height

10–14" for feeder depth

Normal outdoor lighting 6hrs dark/light

Proper Ventilation





Let's Get to Work

- Animal
- Feed Plan
- Shelter/Space





Some Final Thoughts

- Have a good health check list
- Deworm and vaccinate– check with your veterinarian for recommendations
- Have a veterinarian connection
- Have an emergency plan
- Work with animals during the comfortable time of day for the animal
- Use the tools you have
- Have a blast
- Take pride in your project



Questions?

Cash Yount

cash.yount@chsinc.com

406-231-0834

