



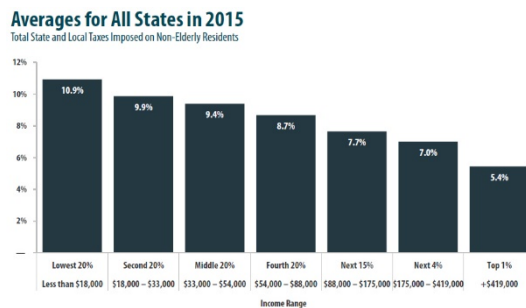
February 2015

Reports & Resources

How Regressive Local Taxes Are Rewarding the Rich

Institute on Taxation and Economic Policy | [READ STORY](#)

The newest edition of [Who Pays: A Distributional Analysis of the Tax Systems in All Fifty States](#) from the non-partisan Institute on Taxation and Economic Policy (ITEP) looked at sales and excise taxes, property taxes and income taxes across all 50 states, and found that, on average, the poorest 20 percent of households pay more than double (10.9 percent) the effective tax rate paid by the top 1 percent (5.4 percent).



Low Income Students Now a Majority in the Nation's Public Schools

Southern Education Foundation | [READ STORY](#)

President's Corner

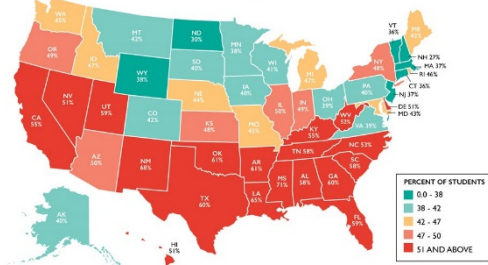
Our **2015 MSU Extension CD Update** is tentatively scheduled for early winter at Chico Hot Springs. A small committee is coordinating the event including the agenda and invitation of a speaker from outside Montana. Stay tuned for more information.

The **2015 Community Development Society Conference Call for Abstracts** deadline for submissions has been extended to Feb. 15, 2015. This year's conference will be July 19-22 in Lexington, KY. For a complete set of instructions, [click here](#); To submit an abstract, click on this [link](#).

The [third issue of 'Practice Insights'](#), the on-line and print publication of the **International Association for Community Development (IACD)**, explores the theme of community resilience. More

Low income students are now a majority of the schoolchildren attending the nation's public schools, according to this [research bulletin](#). The latest data collected from the states by the National Center for Education Statistics (NCES), show that 51 percent of the students across the nation's public schools were low income in 2013.

PERCENT OF LOW INCOME STUDENTS IN U.S. PUBLIC SCHOOLS 2013
National Average: 51%



SOUTHERN EDUCATION FOUNDATION | SOUTHERNEDUCATION.ORG
Data Source: U.S. Department of Education, National Center for Education Statistics, Common Core of Data

information about the IACD available [here](#).

-Paul Lachapelle
MACDEP President

Upcoming Events

JCEP Leadership Conference 2015

February 11-12, 2015
Las Vegas, NV
Sponsor: NACDEP

Clinton Global Initiative University Meeting

March 6- 8, 2015
Coral Gables, Florida
Sponsor: Clinton Global Initiative

Community Development Academy

March 23-27, 2015
St. Louis, Missouri
Sponsor: University of Missouri Extension

2015 National Extension Energy Summit

April 7-10, 2015
Seattle, WA
Sponsor: Washington State University

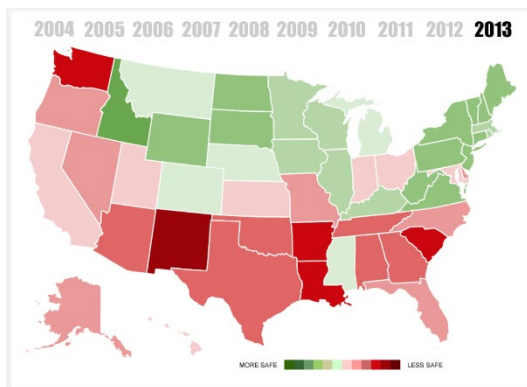
National Service-Learning Conference

April 8-11, 2015
Washington D.C.

Crime is down in the US. But which states benefited the most?

Motovo Real Estate Blog | [READ STORY](#)

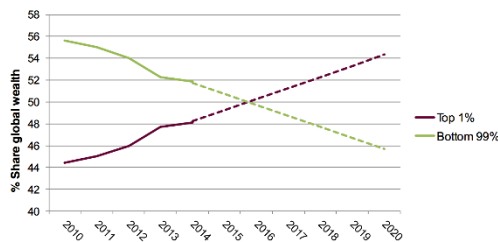
The data-focused [Motovo Real Estate Blog](#) compiled an animated map using [FBI data](#) to look at how every state's overall crime rate compared to the national average each year. Crime rates dropped across the US by roughly 22 percent between 2004 and 2013, but the large decline didn't apply evenly to each state.



Wealth: Having it All and Wanting More

Oxfam | [READ STORY](#)

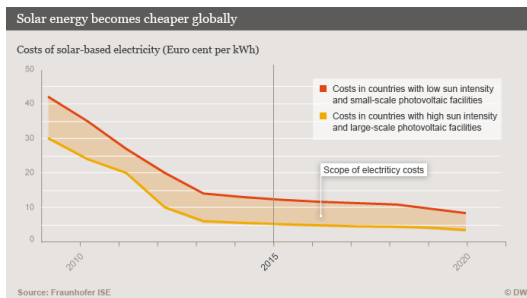
According to a recent [report](#), Global wealth is becoming increasingly concentrated among a small wealthy elite. Since 2010, the richest 1% of adults in the world have been increasing their share of total global wealth. In 2014, the richest 1% of people in the world owned 48% of global wealth, leaving just 52% to be shared between the other 99% of adults on the planet. If this trend continues of an increasing wealth share to the richest, the top 1% will have more wealth than the remaining 99% of people in just two years.



Solar Energy on the Rise

Deutsche Welle | [READ STORY](#)

Global investment in solar energy is on the rise. In 2014, sales of solar panels increased by 20 percent. As the cost of solar energy production continues to fall, the market is experiencing something of a boom. In many parts of the world, it has become cheaper to produce solar power than diesel oil, gas, coal or nuclear energy.



The #1 reason people die early, in each country

Lancet | [READ STORY](#)

Data from the recently published [Global Burden of Disease study](#) has been compiled and used to show the leading cause of lost years of life by country.

Sponsor: National Youth Leadership Council

Grants, Awards & Jobs

Choice Neighborhood Implementation Grant Program

Deadline: Feb 9, 2015
Funder: U.S. Department of Housing and Urban Development

Community Action Grant

Deadline: Feb 28, 2015
Funder: Gannett Foundation

Community Economic Development Projects

Deadline: Apr 24, 2015
Funder: Administration for Children and Families

U.S. Rural Infrastructure Opportunity Fund

Deadline: Open
Funder: CoBank, Capitol Peak Asset Management, and USDA

National/International News

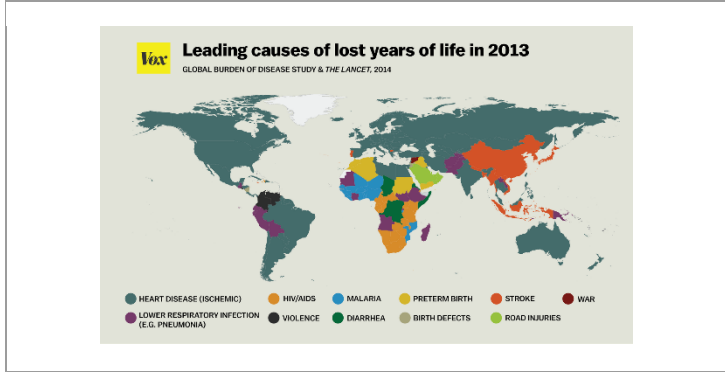
Outgoing Congressman Introduces 'Ansel Adams Act'

Flathead Beacon; Jan 12

Nearly 23,000 jobs linked to oil drilling industry to be slashed this year, group says

Calgary Herald; Jan 21

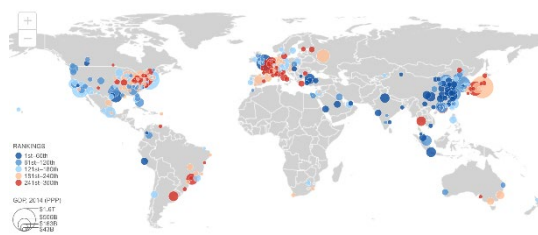
Renewable energy generation made steady gains in 2013



Global Metro Monitor Map

Brookings | [READ STORY](#)

With only 20 percent of the population, the world's 300 largest metropolitan economies accounted for nearly half of global output in 2014. This [interactive](#) map and [report](#) compare growth patterns in the world's 300 largest metro economies on two key economic indicators—annualized growth rate of real GDP per capita and annualized growth rate of employment.



Denver Post; Jan 22

ECB executive warns over 'weakened' European Union

BBC; Jan 24

Montana News

Glacier Park International Airport Breaks Passenger Record

Flathead Beacon; Jan 8

Organizers plan Tour of Montana bicycle event in Missoula

NBC Montana; Jan 16

Slow and steady: Butte looks for economic jump-start

Montana Standard; Jan 26

Commissioners again endorse Bozeman Fiber project

Bozeman Daily Chronical; Jan 26



MSU Extension Community Development | Wilson Hall 2-117 P.O. Box 172240 | Bozeman, MT 59717-2240

Tel: (406) 994-3620

Back issues of the MACDEP E-news are available [here](#)

To subscribe to the Montana CD E-Newsletter, send a request to: commdev@montana.edu