

MACDEP^ENEWS

MONTANA ASSOCIATION OF COMMUNITY DEVELOPMENT EXTENSION PROFESSIONALS

October 2014

Reports & Resources

The State of Food Insecurity in the World 2014

FAO | [READ STORY](#)

This [report](#) titled [The State of Food Insecurity In the World 2014](#) discusses how much progress the world has made at reaching the Millennium Development Goal (MDG) hunger targets. Though some progress has been made, it has not been at the pace required to meet the MDG. It states that if the MDG is to be reached, sustained political commitment at the highest level will be required.

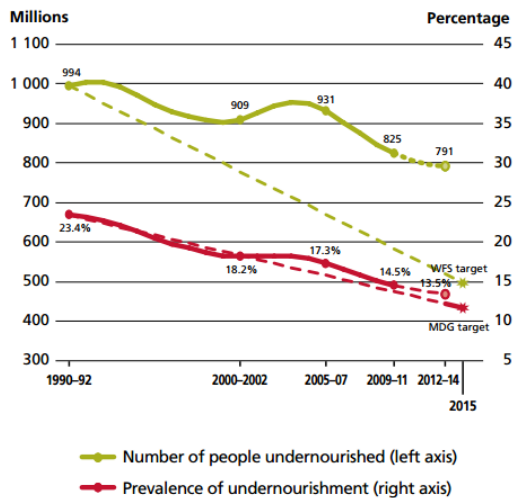
President's Corner

A **Community Development Campus Tour** has been scheduled during our upcoming Montana State University Extension Annual Conference, 2:30-5:00 pm, Wed. Oct.22. This walking tour will introduce extension faculty and staff to several community and economic development-related programs offered across the MSU campus including the Jake Jabs College of Business Center for Entrepreneurship for the New West, the School of Architecture Community Design Center and the Western Transportation Institute. Please plan to join us regardless of your program area of emphasis.

-Paul Lachapelle
MACDEP President

FIGURE 1

The trajectory of undernourishment in developing regions: actual and projected progress towards the MDG and WFS targets



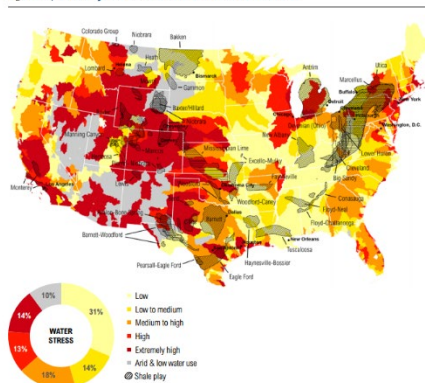
Note: Data for 2012-14 refer to provisional estimates.
Source: FAO.

Global Shale Gas Development: Water Availability & Business Risks

WRI | [READ STORY](#)

It is widely agreed that shale play development has critical environmental risks and impacts associated with it, but the risks and impacts specific to surface and groundwater availability have been thinly documented. This report provides the first publicly available, global and country-specific analysis to help evaluate freshwater availability across shale resources worldwide. The [report](#) identifies locations most in need of government oversight and informs companies of potential business risks associated with freshwater availability.

Figure A11 | Shale Plays and Baseline Water Stress in the United States



Upcoming Events

Applications of the Community Capitals Framework in Natural Resource Planning, the Environment and Community Vitality

November 5-7, 2014
Lincoln, Nebraska
Sponsor: Community Capitals Framework Institute

2014 Talloires Network Leaders Conference

Dec 2-4, 2014
Cape Town, South Africa
Sponsor: Talloires Network

14th Annual New Partners for Smart Growth Conference

January 29-31, 2015
Baltimore, MD
Sponsor: New Partners for Smart Growth and [The Local Government Commission](#)

C2U Expo

May 26-29, 2015
Carleton University, Ottawa
Sponsor: Canada

Grants, Awards & Jobs

Community Grants

Deadline: Rolling Deadline
Funder: The Safeway Foundation

Support for Organizations Assisting Low-Income Communities

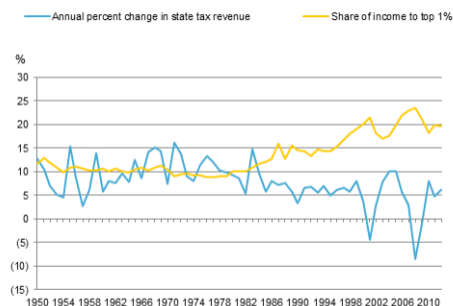
Deadline: Open
Funder: The Kresge Foundation

Income Inequality Weighs on State Tax Revenues

Standard & Poors | [READ STORY](#)

This paper finds that increasing income inequality is undermining the rate of state tax revenue growth. In addition, it is contributing to volatility in tax revenue collections. Some of the key findings were that: from 1980 to 2011, average annual state tax revenue growth fell to 5% from 10% while total income for the top 1% of earners doubled; state tax revenue trends have become more volatile; the disparity in income is contributing to weaker tax revenue growth by weakening the rate of overall economic expansion; and that it's unlikely that states can fully correct for slower tax revenue growth by adjusting their tax policies.

Income Concentration And Annual Percentage Change In State Tax Revenues



© Standard & Poor's 2014.

Hidden in Plain Sight: A statistical analysis of violence against children

UNICEF | [READ STORY](#)

This [UNICEF report](#) was released in September of 2014 and discusses the prevalence of different forms of violence against children, with global figures and data from 190 countries. The analyses focus primarily on forms of interpersonal violence, defined as violent acts inflicted on children by another individual or a small group. The combined sources used to gather data from 190 different countries represents the largest compilation of statistics to date on violence against children.

[Health, Education, Human Services and Community Affairs Grants](#)

Deadline: Rolling

Funder: RGK Foundation

Rural Initiative

Deadline: November 1, 2014

Funder: Laura Jane Musser Fund

National/International News

Colorado State launches water-quality monitoring in oil, gas zones

Denver Post; September 24

U.S. to pay Navajo Nation \$554M in largest settlement with single Indian tribe

Salt Lake Tribune; September 24

Tribes from US, Canada Sign Bison Treaty

Flathead Beacon; September 24

The Head-Scratching Case of the Vanishing Bees

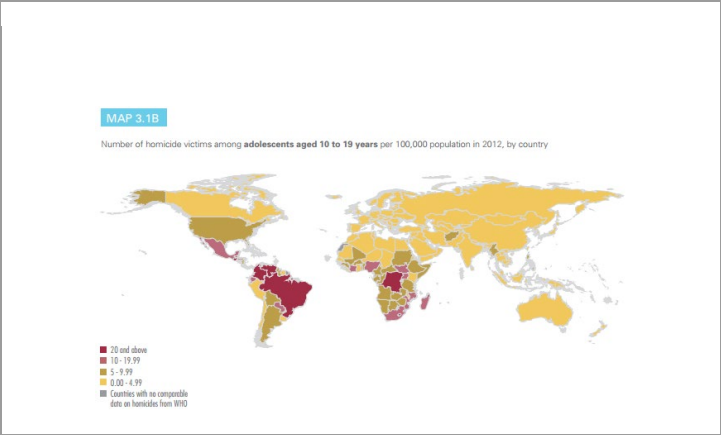
NYtimes; September 28

As Wild Horses Overrun the West, Ranchers Fear Land Will Be Gobbled Up

NY Times; September 30

Montana News

Under Scrutiny, Forest Service Seeks to Clarify New Wilderness Rule



Measuring Sprawl 2014

Smart Growth America | [READ STORY](#)

The Measuring Sprawl 2014 report by Smart Growth America analyzes development patterns in 221 metropolitan areas and 994 counties in the United States. Researchers used four primary factors—residential and employment density; neighborhood mix of homes, jobs, and services; strength of activity centers and downtowns; and accessibility of the street network—to evaluate development in these areas and assign a Sprawl index score to each. This report includes a list of the most compact and most sprawling metro areas in the country.

TABLE 1
Most compact, connected metro areas, nationally

Rank	Metro area	Index score
1	New York/White Plains/Wayne, NY-NJ	203.4
2	San Francisco/San Mateo/Redwood City, CA	194.3
3	Atlantic City/Hammonton, NJ	150.4
4	Santa Barbara/Santa Maria/Goleta, CA	146.6
5	Champaign/Urbana, IL	145.2
6	Santa Cruz/Watsonville, CA	145.0
7	Trenton/Ewing, NJ	144.7
8	Miami/Miami Beach/Kendall, FL	144.1
9	Springfield, IL	142.2
10	Santa Ana/Anaheim/Irvine, CA	139.9

The Global Commission on the Economy and Climate New Climate Economy Report 2014

Global Commission | [READ STORY](#)

The next 15 years will be critical, as the global economy undergoes a deep structural transformation that will determine the future of the world’s climate system. The global economy will grow by more than half, a billion more people will come to live in cities, and rapid

Flathead Beacon; September 25

State to hold public meetings on water plan
Bozeman Chronicle; September 30

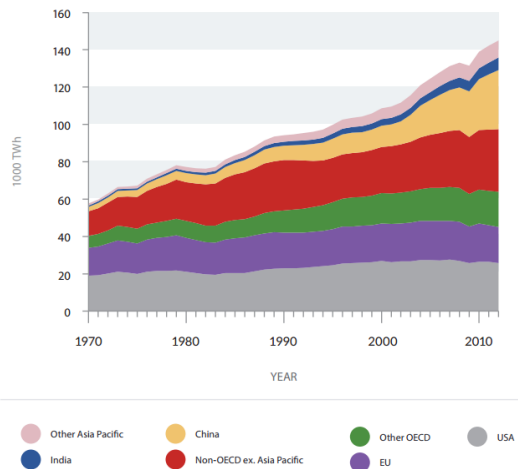
Climate plan faces test in Montana coal country
Helena Independent Record; September 30

Montana's minimum going up to \$8.05 an hour
The Missoulian; October 1

Montana universities' tuition doubles since 2000; groups decry debt
Billings Gazette; October 1

technological advances will continue to change businesses and lives. This website will provide access to country cases and working papers; currently the only release is the global report which is available [here](#). This report lays out how countries across the world can reduce the risks of climate change and achieve high-quality, resilient, and inclusive economic growth.

Figure 1
Global primary energy consumption by region 1970-2012



MSU Extension Community Development | Wilson Hall 2-117 P.O. Box 172240 | Bozeman, MT 59717-2240

Tel: (406) 994-3620

Back issues of the MACDEP E-news are available [here](#)

To subscribe to the Montana CD E-Newsletter, send a request to: commdev@montana.edu