

MACDEP NEWS

MONTANA ASSOCIATION OF COMMUNITY DEVELOPMENT EXTENSION PROFESSIONALS

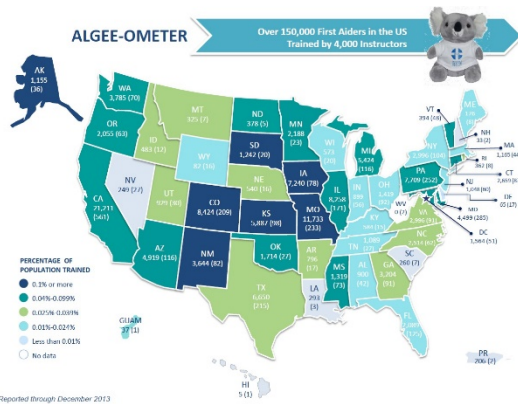
July 2014

Reports & Resources

A Mental-Health Firstaid Kit

Daily Yonder | [READ STORY](#)

MHFA (Mental Health First Aid) is a program that aims at training individuals to identify symptoms of mental health issues so that they may help friends, family, and community members with addressing these issues. This article discusses how this program came to be, the progress it is seeing, and the benefits to rural communities.



Wealth Levels, Wealth Inequality, and the Great Recession

Russell Sage Foundation | [READ STORY](#)

President's Corner

The 2014 NACDEP 10th Anniversary Conference just wrapped up in Grand Rapids, MI with another great opportunity for learning, networking and information sharing between over 200 community development colleagues who attended. A reminder to update or create your NACDEP member directory [profile](#). The 2014 CDS Conference will take place July 20-23 in Dubuque, Iowa; the [Conference Schedule](#) is now available on-line.

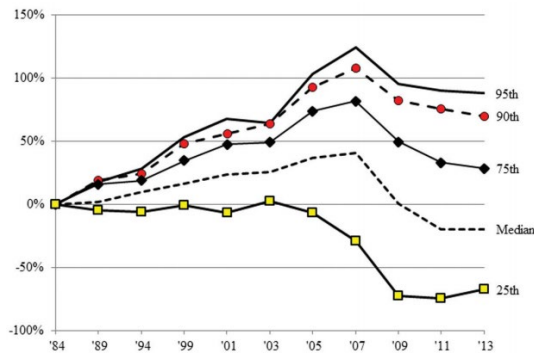
-Paul Lachapelle
MACDEP President

Upcoming Events

CDS 2014 Conference

July 20-23, 2014
Dubuque, IA
Sponsor: University of Illinois,

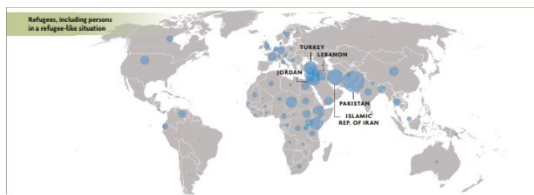
This paper looks at the effect, if any, the 2008 recession had on income inequality in the USA. The report finds that income inequality is rapidly increasing and the recession most likely sped up inequality; current trends and data show that this will remain the case.



World's Global Refugee Population Highest Since WWII

[UNHCR](#) | [READ STORY](#)

This report, released by the UN refugee agency discusses the trends of displaced people in the year 2013. According to the report over 50 million individuals are displaced with around one-third of them being refugees (having left their country). The UNHCR has created a plan to deal with the record number of displaced peoples and currently 21 nations have agreed to follow the UNHCR strategy.



Catastrophe Modeling and Climate Change

[Lloyds](#) | [READ STORY](#)

This report discusses the effect of climate change on the insurance industry; the effect is largely negative. Using modeling and other statistical measures it may be possible for insurance companies to gain a better understanding on the effect of climate change thus

University of Wisconsin, and
Iowa State University
Extension

11th International Conference of engaged scholars and practitioners; Engage and Innovate for Sustainability

July 21-23, 2014
Charles Sturt University,
Wagga Wagga
Sponsor: Engagement
Australia

Live Engagement, Transform Lives

December 2-4, 2014
Cape Town, South Africa
Sponsor: The Talloires
Network

14th Annual New Partners for Smart Growth Conference

January 29-31, 2015
Baltimore, MD
Sponsor: New Partners for
Smart Growth and [The Local
Government Commission](#)

Grants, Awards & Jobs

Community Grants

Deadline: Rolling Deadline
Funder: The Safeway
Foundation

Various Environmental Grants and Financial Literacy Grants

Deadline: Rolling Basis
Funder: Cornell Douglas
Foundation

[Art Works](#)

increasing their effectiveness. Climate change has already increased the probability of flood events in the UK such as those which occurred in 2000, and a 1 in 5 rainfall event could be 40% larger in future.



Tracking Climate Finance in Developing Countries: Easing the Way Forward

[WRI | READ STORY](#)

A new report by the World Resources Institute titled [Monitoring Climate Finance in Developing Countries: Challenges and Next Steps](#) presents an overview of why climate change funding is difficult to track in developing countries and provide two suggestions: develop or modify systems and procedures to monitor finance received that suits developing countries' needs and enhance institutional arrangements and coordination among stakeholders.

Deadline: July 24, 2014
Funder: National Endowment for the Arts

Rural Business Investment Program

Deadline: July 29, 2014
Funder: Rural Development, USDA

National/International News

Obama to create world's largest ocean preserve

Salt Lake Tribune; June 17

A Big Bet on Coal

The Durango Herald; June 18

Buying Into Solar Power, No Roof Access Needed

NY Times; June 19

Northern Gateway likely to threaten at-risk species, but feds say impacts 'justified'

The Vancouver Sun; June 19

Lawsuit seeks to protect wolf OR-7, pups from timber sale that may be too close to den

Associated Press; June 19

Montana News

5 entities in the running to get Yellowstone bison

Casper Star Tribune; June 17

The things they carry

Missoula Independent; June 19



How many wolves are In Montana?

Indepent Record; June 19

Risch, Crapo sign on to bill to block new waters rules

Magic Valley; June 19

Ag secretary proposes closing sheep station

Bozeman Daily Chronicle; June 27

Leading Former Republicans Launch Report Warning Climate Change 'to Cost Billions'

[The Telegraph](#) | [READ STORY](#)

This article discusses the findings of the newly released [Risky Business Report](#). Hank Paulson, George W Bush's former treasury secretary who led the US response to the 2008 financial crisis, has joined with Michael Bloomberg, the billionaire former mayor of New York, to enlist business leaders in the fight against climate change. Their study, backed by a number of senior former government officials from both parties, warns of billions of dollars in losses to American businesses if action is not taken against climate change.



MSU Extension Community Development | Wilson Hall 2-117 P.O. Box 172240 | Bozeman, MT 59717-2240
Tel: (406) 994-3620

Back issues of the MACDEP E-news are available [here](#)
To subscribe to the Montana CD E-Newsletter, send a request to: commdev@montana.edu