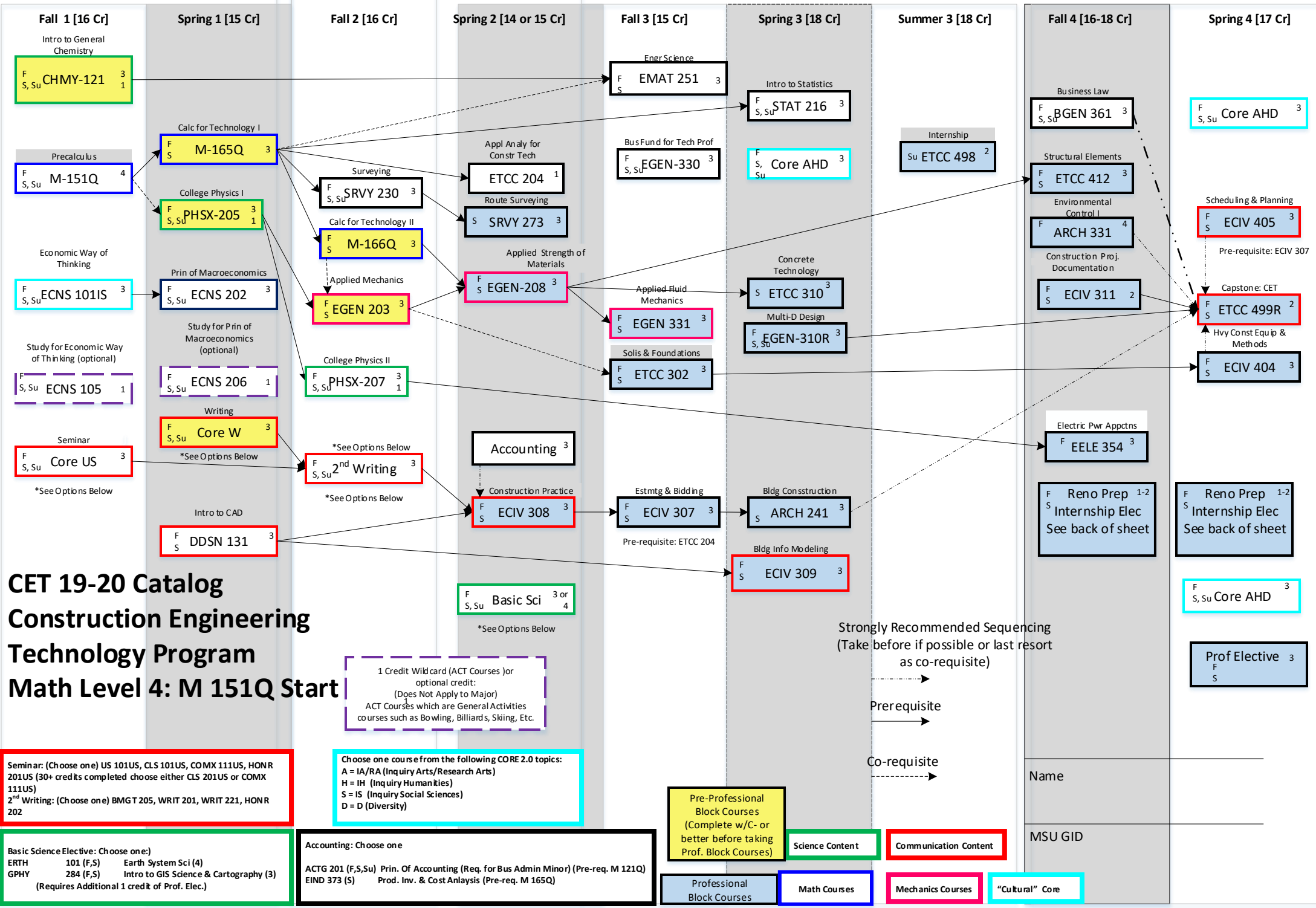


1st Year

2nd Year

3rd Year

4th Year



**CET 19-20 Catalog
Construction Engineering
Technology Program
Math Level 4: M 151Q Start**

Seminar: (Choose one) US 101US, CLS 101US, COMX 111US, HONR 201US (30+ credits completed choose either CLS 201US or COMX 111US)
2nd Writing: (Choose one) BMGT 205, WRIT 201, WRIT 221, HONR 202

Basic Science Elective: Choose one(s)
 ERTH 101 (F,S) Earth System Sci (4)
 GPHY 284 (F,S) Intro to GIS Science & Cartography (3)
 (Requires Additional 1 credit of Prof. Elec.)

Accounting: Choose one
 ACTG 201 (F,S,Su) Prin. Of Accounting (Req. for Bus Admin Minor) (Pre-req. M 121Q)
 EIND 373 (S) Prod. Inv. & Cost Analysis (Pre-req. M 165Q)

1 Credit Wild card (ACT Courses) or optional credit:
 (Does Not Apply to Major)
 ACT Courses which are General Activities courses such as Bowling, Billiards, Skiing, Etc.

Choose one course from the following CORE 2.0 topics:
 A = IA/RA (Inquiry Arts/Research Arts)
 H = IH (Inquiry Humanities)
 S = IS (Inquiry Social Sciences)
 D = D (Diversity)

Strongly Recommended Sequencing
 (Take before if possible or last resort as co-requisite)

Prerequisite

Co-requisite

Name	
MSU GID	

Pre-Professional Block Courses (Complete w/C- or better before taking Prof. Block Courses)

Science Content

Communication Content

Professional Block Courses

Math Courses

Mechanics Courses

"Cultural" Core